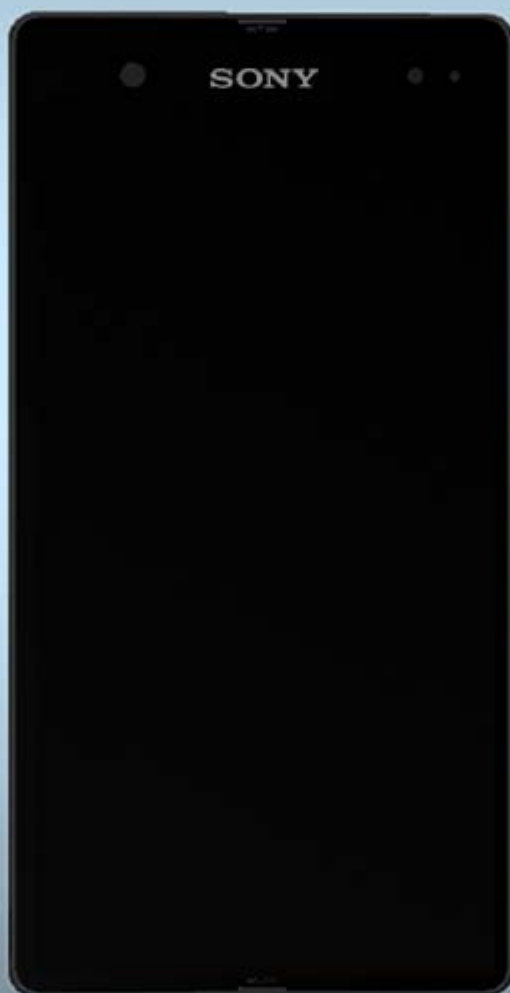


SONY

make.believe

Working Instructions

- mechanical -



Xperia™ Z

C6602, C6603, C6606, C6616, L36h

CONTENTS

1	Exterior Views.....	5
2	Tools	6
3	Disassembly.....	8
3.1	SIM Tray	8
3.2	Back Panel Assy.....	9
3.3	Ant Diversity Flex RoW	10
3.4	Copper Sheet McamB	11
3.5	Camera 13 MPixel CMOS	11
3.6	Camera 2.2 MPixel CMOS	12
3.7	Sheet Battery FPC	12
3.8	Main PBA.....	13
3.9	FPC Assembly Top RoW	14
3.10	Cover Con Vibrator	15
3.11	Ant Main Flex RoW.....	15
3.12	PBA Sub RoW and Front Assembly	16
4	Replacement	17
4.1	SIM Tray	17
4.2	Back Panel Assy.....	17
4.3	Ant Diversity Flex RoW	17
4.4	Copper Sheet McamB	17
4.5	Camera 13 MPixel CMOS	18
4.6	Camera 2.2 MPixel CMOS	18
4.7	Sheet Battery FPC	18
4.8	FPC Assembly Top RoW	18
4.9	Cover Con Vibrator	19
4.10	Ant Main Flex RoW.....	19
4.11	PBA Sub RoW	19
4.12	Adhesive Battery1	20
4.13	Adhesive Battery 2	21
4.14	Adhesive Conductive LCD	22
4.15	Adhesive Conductive LCD 2	23
4.16	Adhesive FPC	24
4.17	Adhesive FPC A.....	25
4.18	Adhesive FPC B.....	26
4.19	Adhesive Receiver	27
4.20	Adhesive WP Test Hole	28
4.21	Battery 2330.0 mAh	29
4.22	Cable RF Coax Cable, ASSY	31
4.23	Cap Audio Jack Assy R	32

4.24 Cap SD Assy R	33
4.25 Cap SIM Assy R	34
4.26 Cap USB Assy R	35
4.27 Carrier Holder Coax Cable	36
4.28 Cover Panel Bottom	37
4.29 Cover Panel Top	38
4.30 Cover WP Test Hole	39
4.31 Cupper Sheet McamA	40
4.32 Cushion Battery Bottom	41
4.33 Ear Speaker 12.0 Rectangular_WR	42
4.34 Foil Adhesive Back Panel	43
4.35 Foil Adhesive Double	45
4.36 FPC Assembly Relay FPC & Foil Adhesive Double Side 0.0 mmWP 46	
4.37 Front Assembly	48
4.38 Loudspeaker 15.0 Rectangular	49
4.39 Mcomp Sheet relay FPC	50
4.40 Mesh Receiver	51
4.41 Plate Side Key	52
4.42 Sheet BtB LCD	53
4.43 Sheet WP Test Hole	54
4.44 Water Indicator	55
4.45 Vibrator	56
4.46 Adhesive Double Side 0.0 mmWP Speaker	57
4.47 Carrier Holder 1 st Mic	58
4.48 MComp Sheet WP 1 st Mic	59
4.49 Cover Panel Right Bottom	60
4.50 Mesh Loud Speaker	61
4.51 Board Swap - Replacement	62
4.52 Board Swap – Change Label	63
5 Re-Assembly	64
5.1 PBA Sub RoW and Front Assembly	64
5.2 Ant Main Flex RoW	65
5.3 Cover Con Vibrator	66
5.4 FPC Assembly Top RoW	66
5.5 Main PBA	67
5.6 Sheet Battery FPC	68
5.7 Camera 2.2 MPixel CMOS	69
5.8 Camera 13 MPixel CMOS	69
5.9 Cupper Sheet McamB	70
5.10 Ant Diversity Flex RoW	70



make.believe

Working Instruction Repair Instruction Mechanical/

5.11 Back Panel Assy..... 71

5.12 SIM Tray 73

6 Revision History 74

*For general information about mechanical repair related issues, refer to
1220-1333: Generic Repair Manual - mechanical*

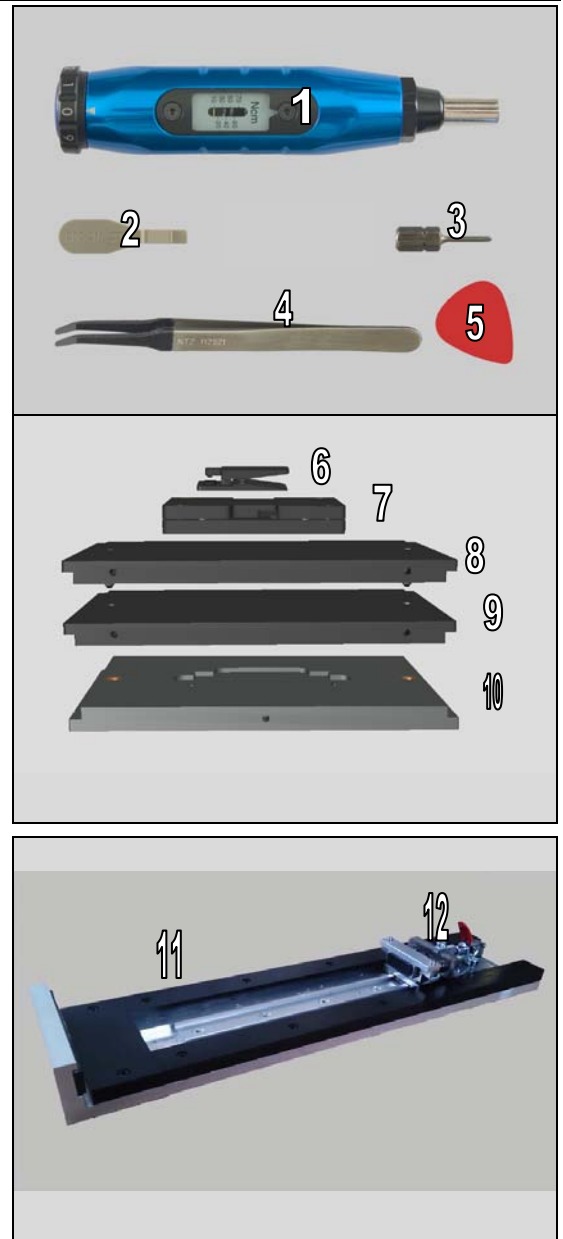
1 Exterior Views



2 Tools

SPECIAL TOOLS

1. Torque Screwdriver
2. Front Opening Tool
3. Bits (JCIS No 0)
4. Flex Film Assembly Tool
5. Guitar Pick
6. Press Tool Loudspeaker
7. Back Panel Top inlay
8. Back Panel press Bottom inlay
9. Battery inlay
10. Back Panel Adhesive fixture
11. Side Panel press
12. Side Panel Press Head



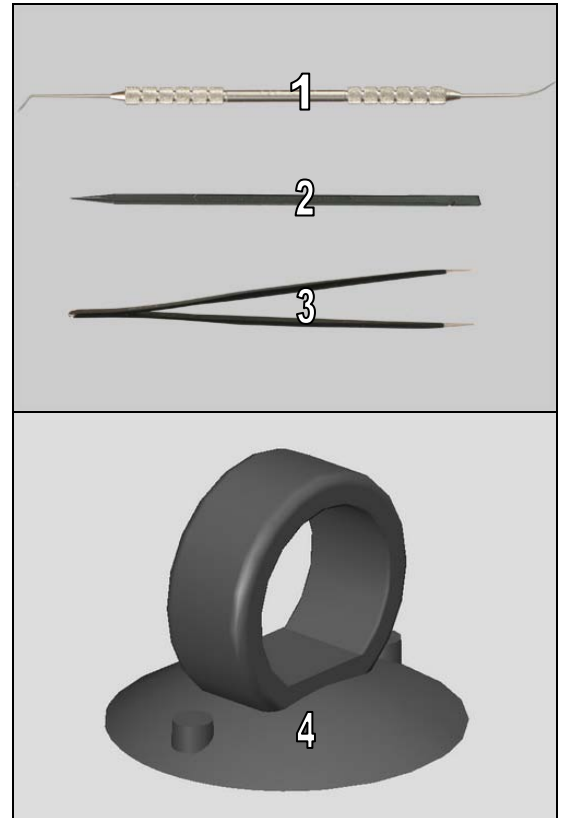
For part not on the tools above, refer to the 'Tools Catalogue/Matrix'!

Tools

STANDARD TOOLS

1. Dentist Hook
2. Nylon Pointer
3. Tweezer

4. Suction cup

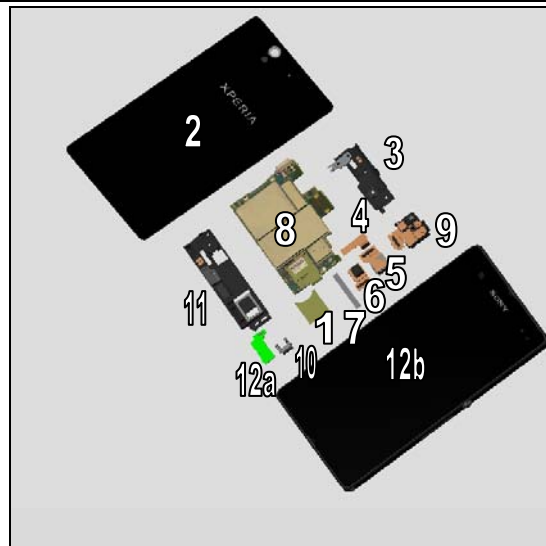


3 Disassembly

C6603, C6602, L36h

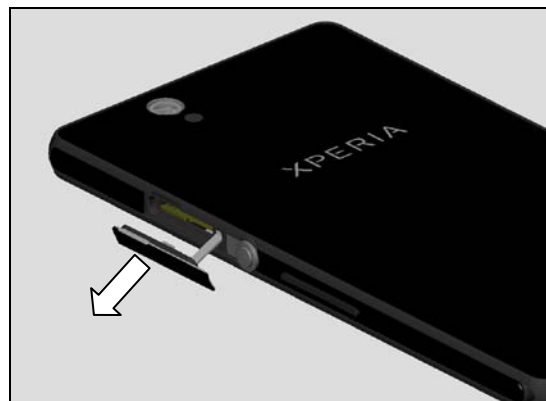
The Disassembly is done to the following modules:

1. SIM Tray
2. Back Panel Assy
3. Ant Diversity Flex RoW
4. Copper Sheet McamB
5. Camera 13 MPixel CMOS
6. Camera 2.2 MPixel CMOS
7. Sheet Battery FPC
8. Main PBA
9. FPC Assembly Top RoW
10. Cover Con Vibrator
11. Ant Main Flex RoW
12. PBA Sub RoW (a) and Front Assembly (b)

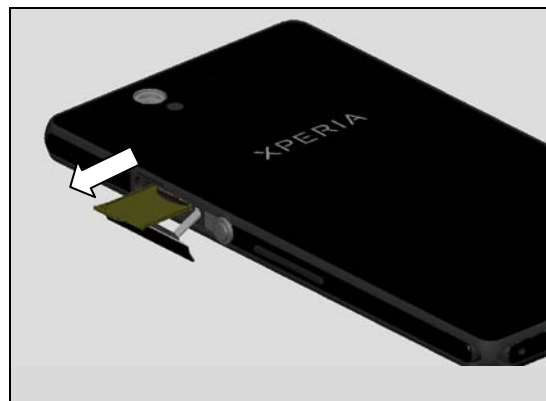


3.1 SIM Tray

Open the Cap SIM Assy R with fingers.



Remove SIM Tray by using fingers.

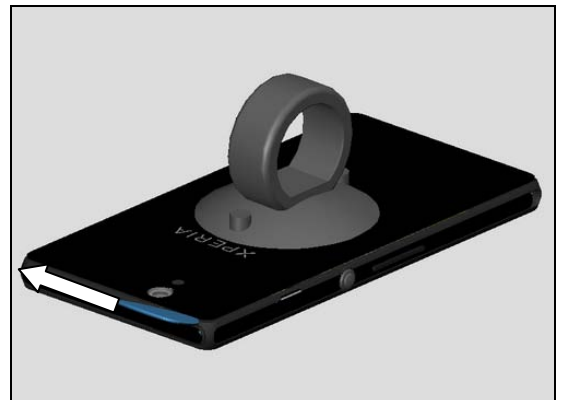
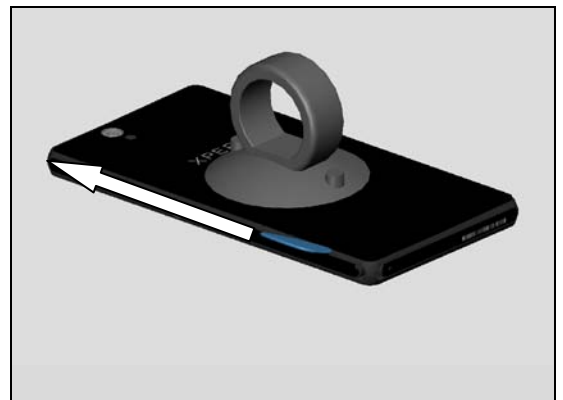
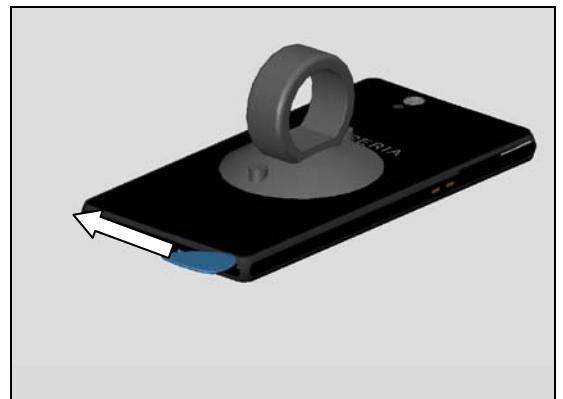
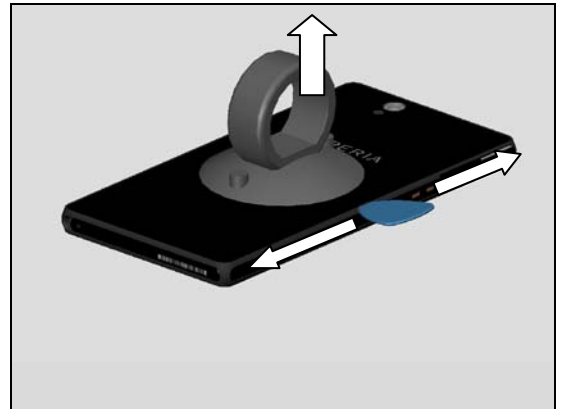


Disassembly

3.2 Back Panel Assy

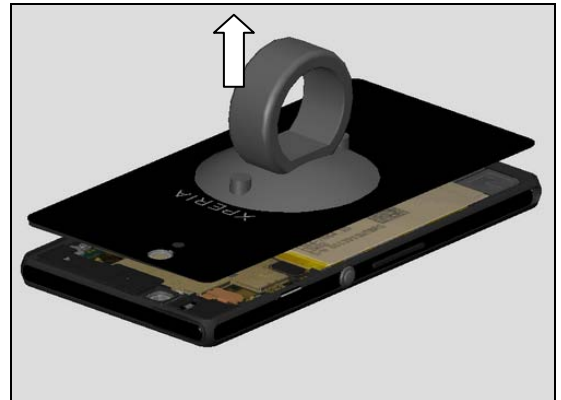
Use Suction cup to get space for inserting the Guitar Pick. Gently slide the Guitar Pick along to release all sides of the Back Panel Assy.

Note! Start in the middle of the right long side!

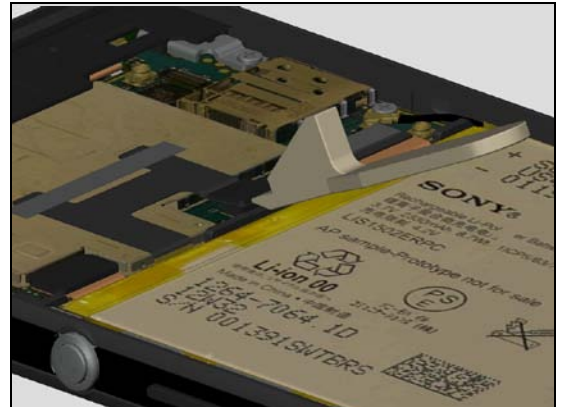


Disassembly

Remove the Back Panel Assy by using the Suction cup.

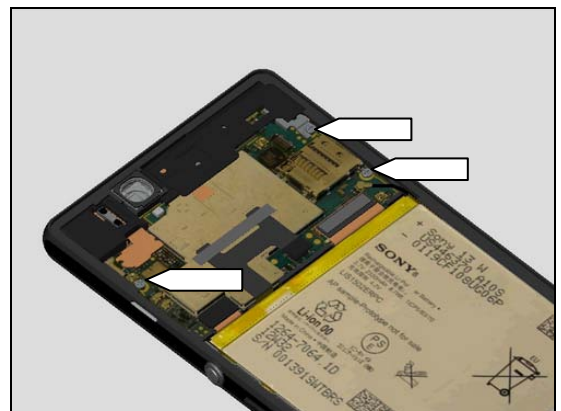


Use a Front Opening Tool to disconnect the BtB connector.

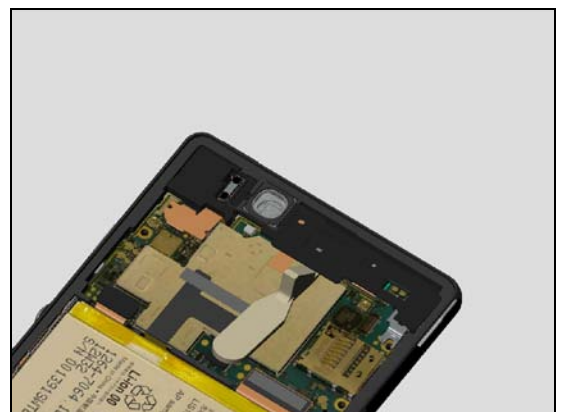


3.3 Ant Diversity Flex RoW

Remove the three Screw Other Len:2.6 Diam:1.4 M by using a screwdriver with Bits (JCIS No 0).

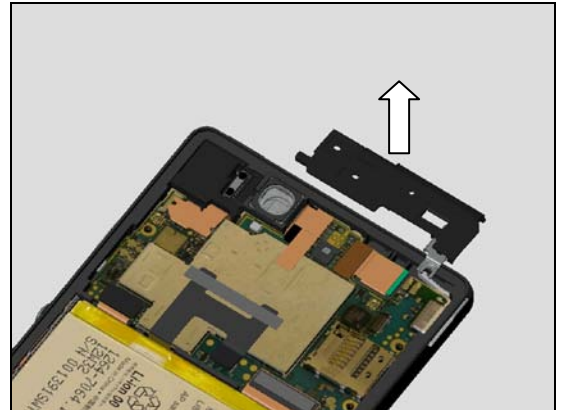


Use a Front Opening Tool to remove the Ant Diversity Flex RoW.



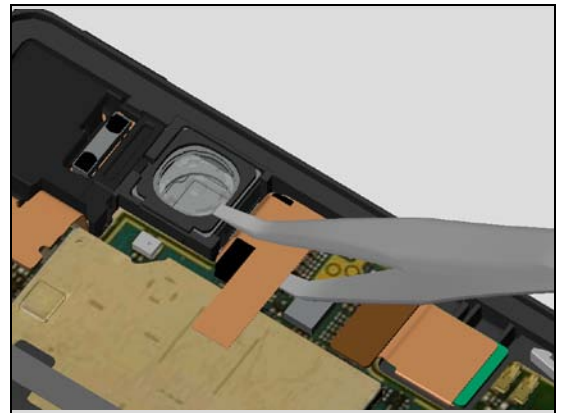
Disassembly

Remove the Ant Diversity Flex RoW with fingers.

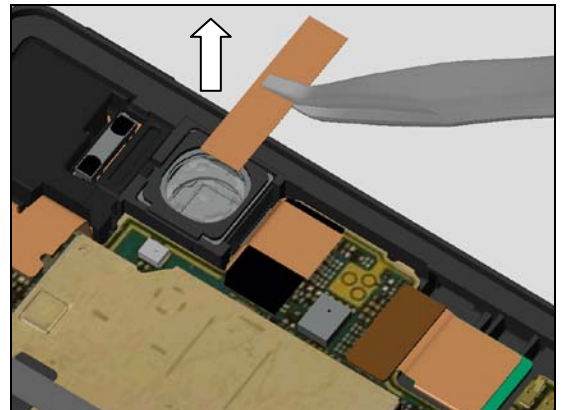


3.4 Copper Sheet McamB

Insert the Flex Film Assembly Tool underneath and slide along to release the Copper Sheet McamB as shown.

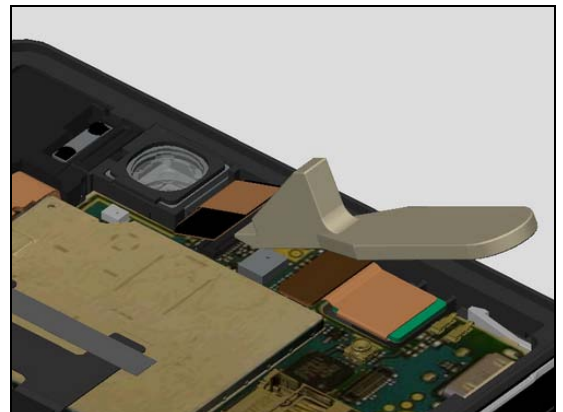


Remove it.



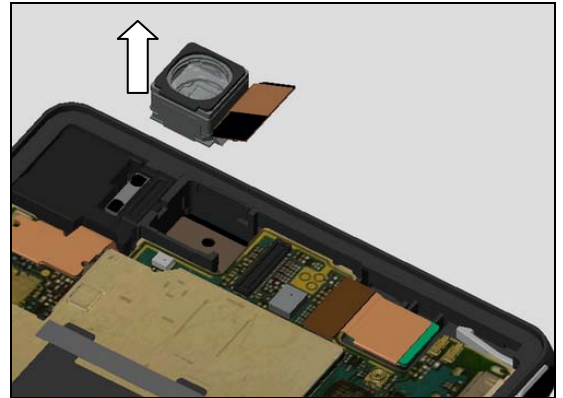
3.5 Camera 13 MPixel CMOS

Use a Front Opening Tool to disconnect the BtB connector.



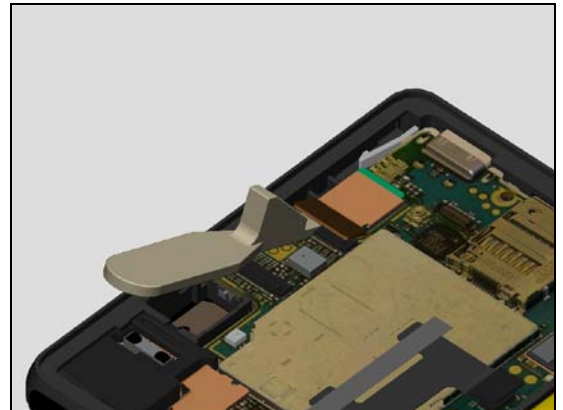
Disassembly

Remove the Camera 13 MPixel CMOS with fingers.

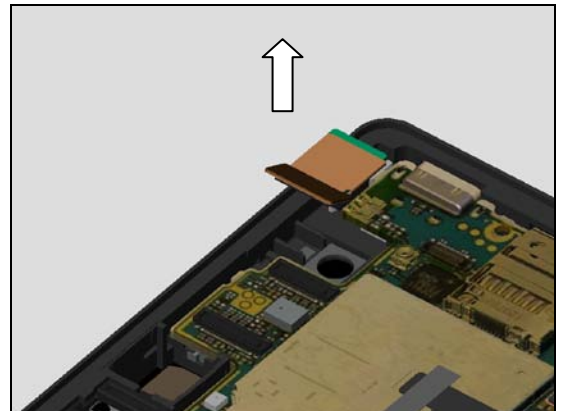


3.6 Camera 2.2 MPixel CMOS

Use a Front Opening Tool to disconnect the BtB connector.

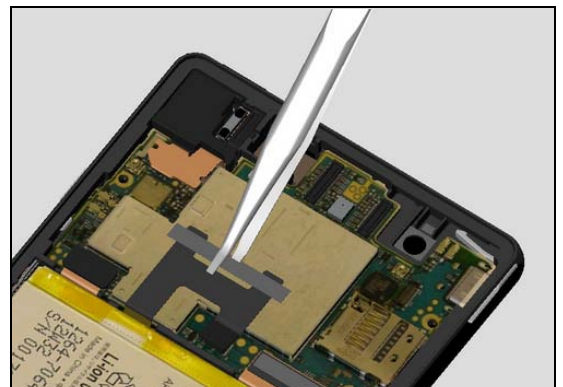


Remove the Camera 2.2 MPixel CMOS with fingers.



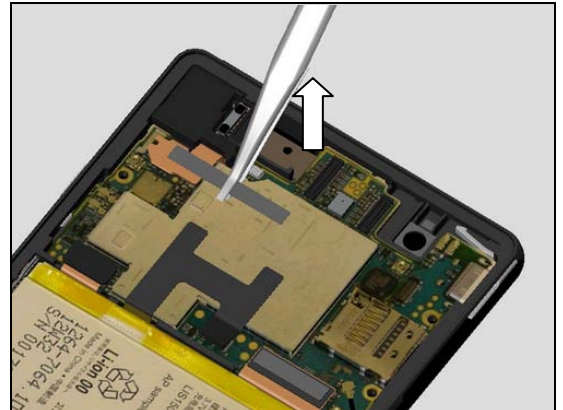
3.7 Sheet Battery FPC

Insert the Flex Film Assembly Tool underneath and slide along to release the Sheet Battery FPC as shown.



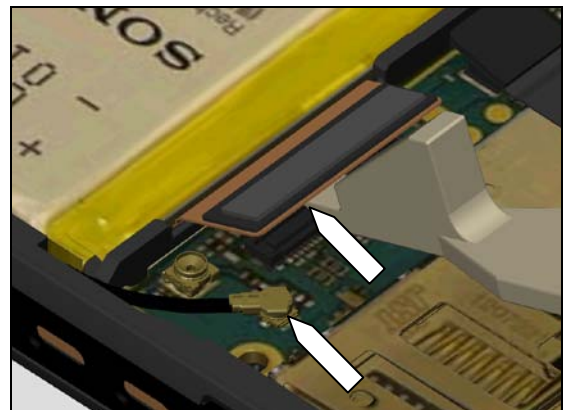
Disassembly

Remove it.

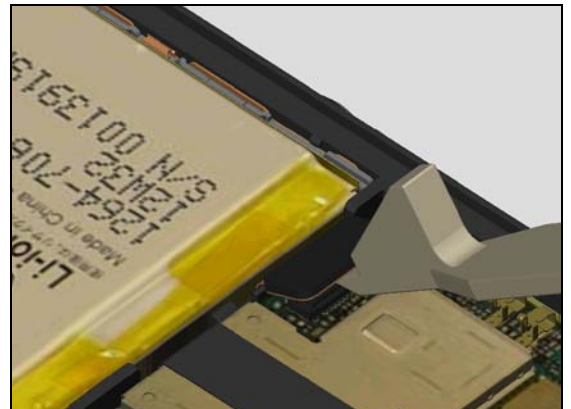


3.8 Main PBA

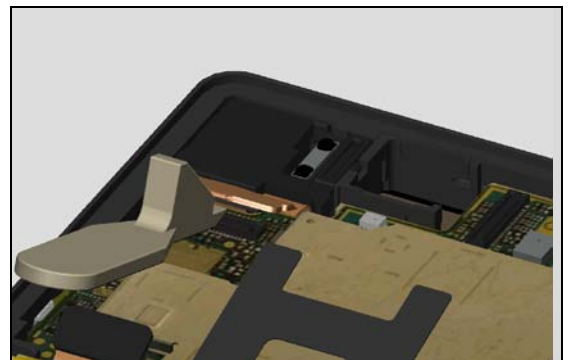
Use a Front Opening Tool to disconnect the BtB connector and Cable RF Coax Cable, ASSY.



Use a Front Opening Tool to disconnect the BtB connector.

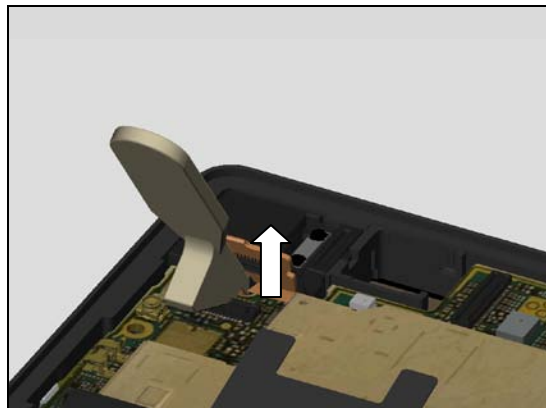


Use a Front Opening Tool to disconnect the BtB connector.

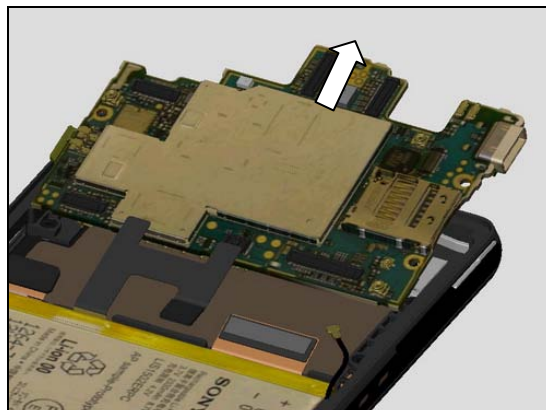


Disassembly

Use a Front Opening Tool to lift up the Main PBA.

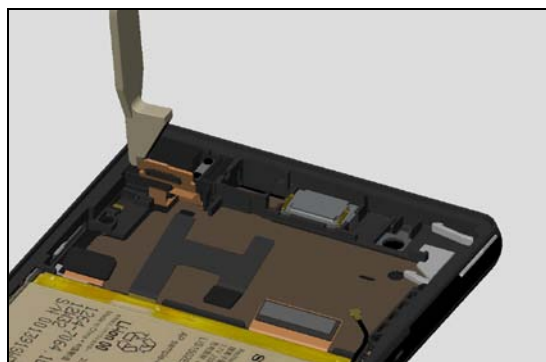


Remove the Main PBA gently with fingers.

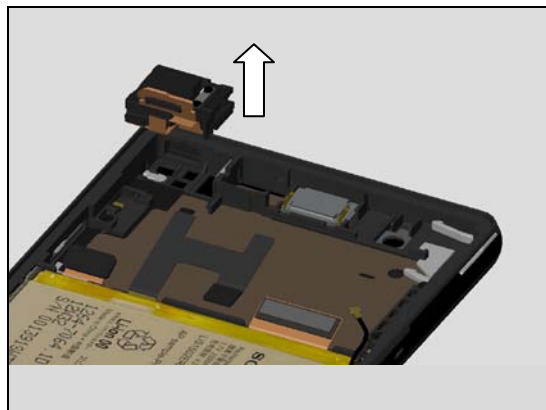


3.9 FPC Assembly Top RoW

Unhook FPC Assembly Top RoW by using Front Opening Tool.



Remove the FPC Assembly Top RoW gently with fingers.



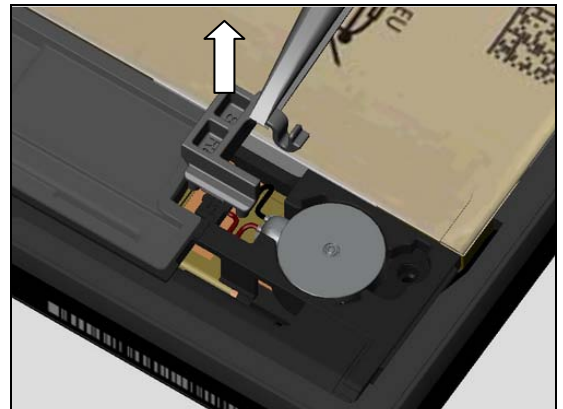
Disassembly

3.10 Cover Con Vibrator

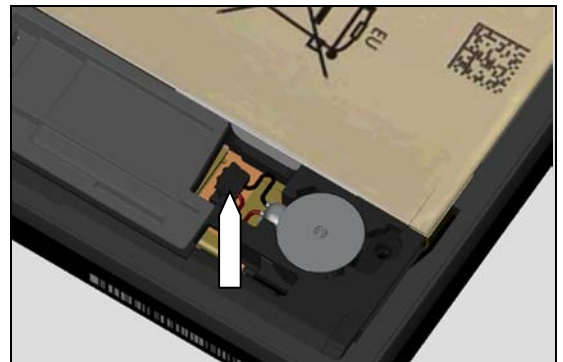
Remove the Screw Other Len:2.6 Diam:1.4 M by using a screwdriver with Bits (JCIS No 0).



Remove Cover Con Vibrator using a pair of tweezers.



Use a Front Opening Tool to disconnect the Vibrator.



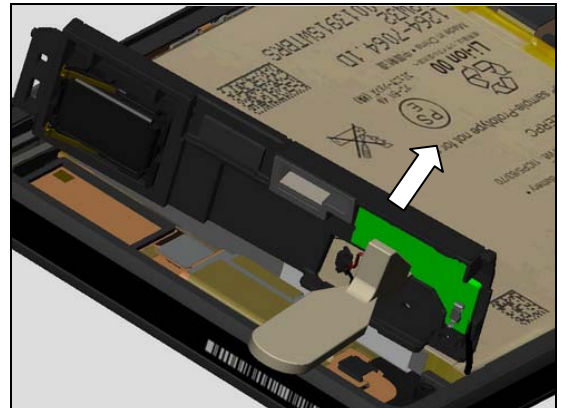
3.11 Ant Main Flex RoW

Unhook Ant Main Flex RoW by using Front Opening Tool.

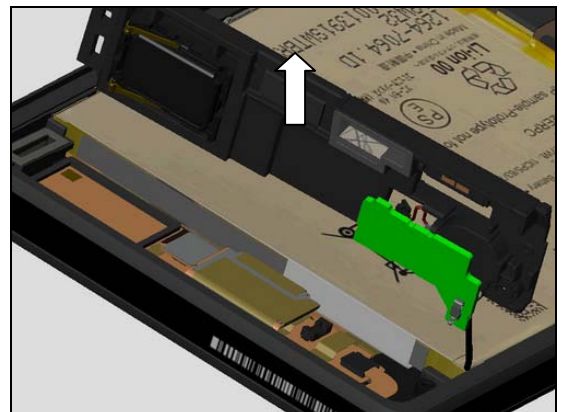


Disassembly

Disconnect PBA Sub RoW from Ant Main RoW using Front Opening Tool.

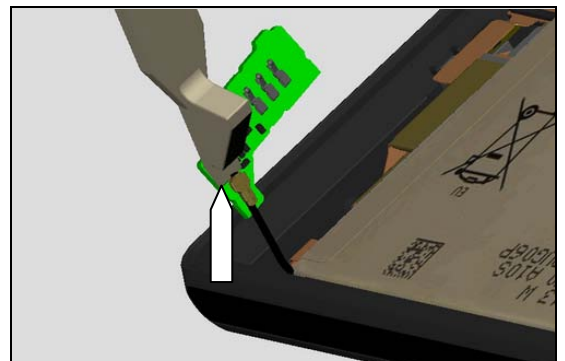


Remove Ant Main Flex RoW.

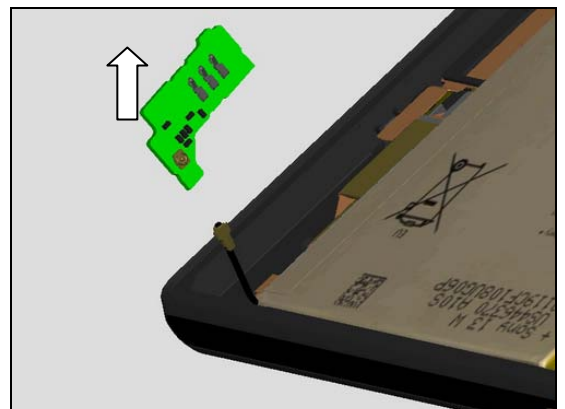


3.12 PBA Sub RoW and Front Assembly

Use a Front Opening Tool to disconnect the Cable RF Coax Cable, ASSY



Remove PBA Sub RoW.



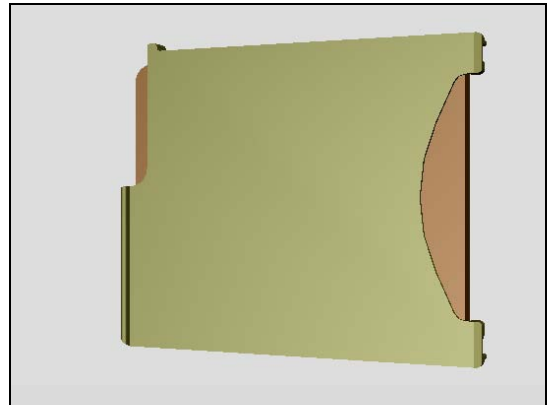
4 Replacement

4.1 SIM Tray

Follow the 3.1 Disassembly instructions section

Prepare a new SIM Tray.

Follow the 5.12 Reassembly instructions section



4.2 Back Panel Assy

Follow the 3.2 Disassembly instructions!

Note! If reuse of Back Panel Assy follow 4.34 Removal Instruction

Prepare a new Back Panel Assy.

Note! If reuse of Back Panel Assy follow 4.34 Installation Instruction

Follow the 5.11 Reassembly instructions!

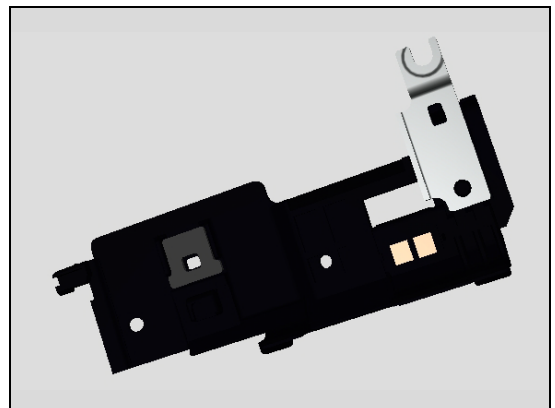


4.3 Ant Diversity Flex RoW

Follow the 3.2 and 3.3 Disassembly instructions!

Prepare a new Ant Diversity Flex RoW.

Follow the 5.10 and 5.11 Reassembly instructions!



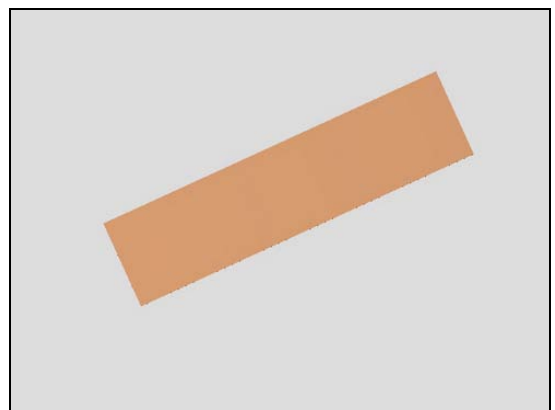
4.4 Copper Sheet McamB

Follow the 3.2 and 3.4 Disassembly instructions!

Scrap! Not to be reused!

Prepare a new Copper Sheet McamB.

Follow the 5.9 and 5.11 Reassembly instructions!



Replacement

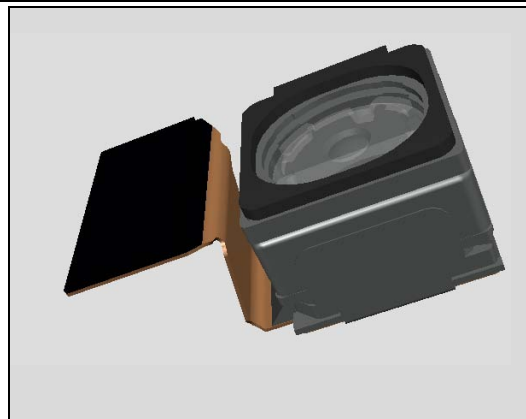
4.5 Camera 13 MPixel CMOS

Follow the 3.2, 3.4 and 3.5 Disassembly instructions!

Prepare a new Camera 13 MPixel CMOS.

Follow the 4.31 Installation instructions!

Follow the 5.8, 5.9 and 5.11 Reassembly instructions!

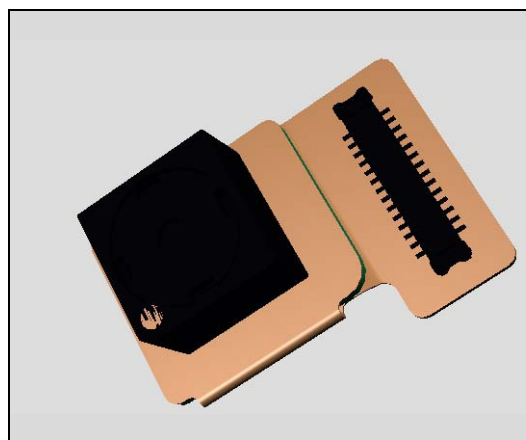


4.6 Camera 2.2 MPixel CMOS

Follow the 3.2 and 3.6 Disassembly instructions!

Prepare a new Camera 2.2 MPixel CMOS.

Follow the 5.7 and 5.11 Reassembly instructions!



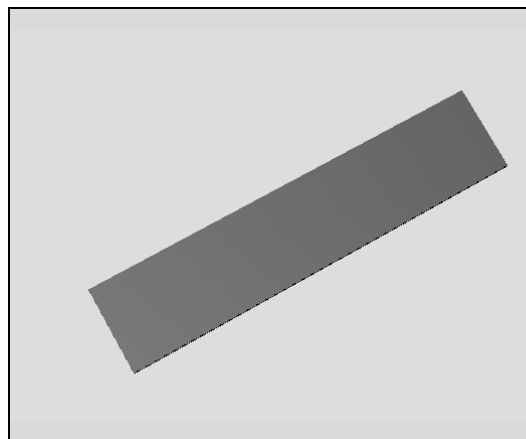
4.7 Sheet Battery FPC

Follow the 3.2 and 3.7 Disassembly instructions!

Scrap! Not to be reused!

Prepare a new Sheet Battery FPC.

Follow the 5.6 and 5.11 Reassembly instructions!

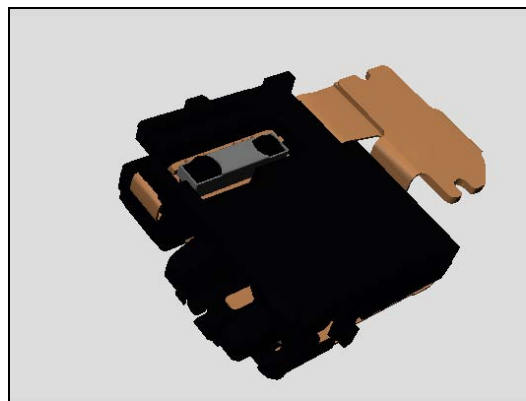


4.8 FPC Assembly Top RoW

Follow the 3.1 - 3.9 Disassembly instructions!

Prepare a new FPC Assembly Top RoW.

Follow the 5.4 - 5.12 Reassembly instructions!



Replacement

4.9 Cover Con Vibrator

Follow the 3.2 and 3.10 Disassembly instructions!

Prepare a new Cover Con Vibrator.

Follow the 5.3 and 5.11 Reassembly instructions!



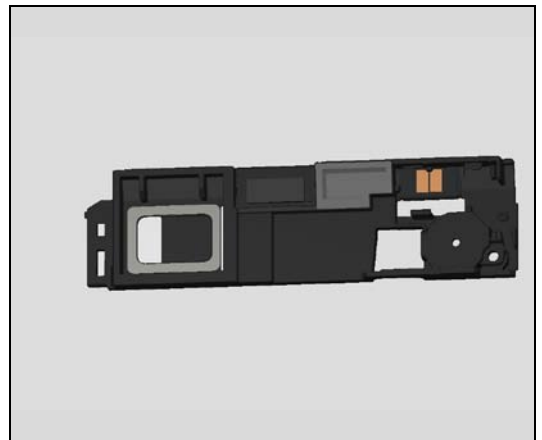
4.10 Ant Main Flex RoW

Follow the 3.2 3.10 and .3.11 Disassembly instructions!

Prepare a new Ant Main Flex RoW.

Follow the 4.32, 4.38 and 4.45 Installation instructions!

Follow the 5.2, 5.3 and 5.11 Reassembly instructions!

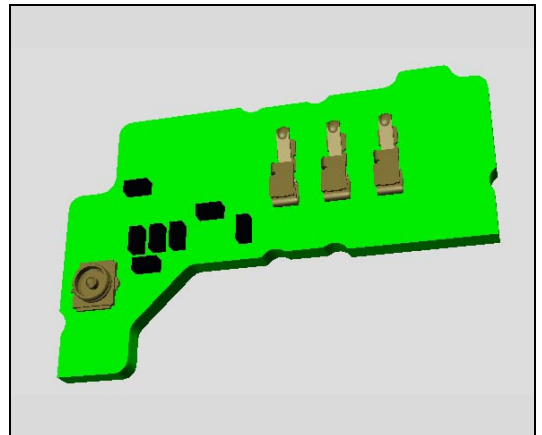


4.11 PBA Sub RoW

Follow the 3.2 and 3.10 -3.12 Disassembly instructions!

Prepare a new PBA Sub RoW.

Follow the 5.1 - 5.3 and 5.11 Reassembly instructions!



Replacement

4.12 Adhesive Battery1

Follow the 3.2 and 3.7 Disassembly instructions!

Follow the 4.21 Removal instructions!

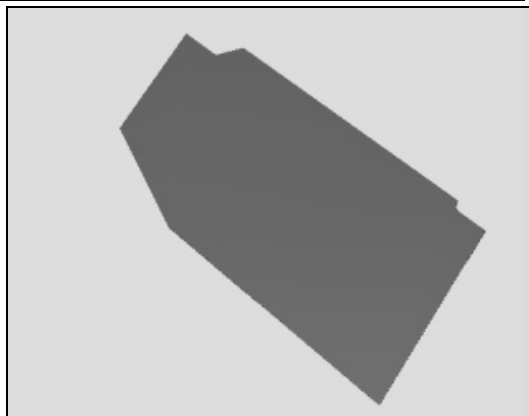
Carry out the Removal as described below!

Prepare a new Adhesive Battery!

Carry out the Installation as described below!

Follow the 4.21 Installation instructions!

Follow the 5.6 and 5.11 Reassembly instructions!



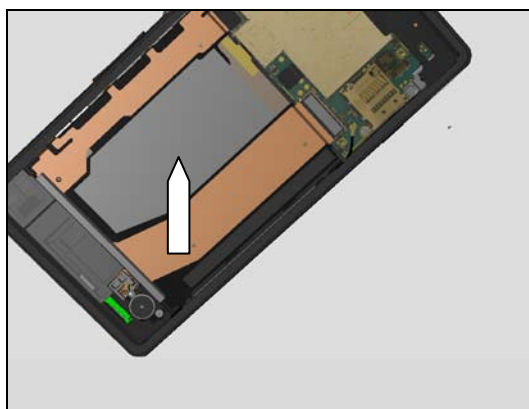
REMOVAL

Detach to remove the Adhesive Battery 1 with the Flex Film Assembly Tool.

Scrap! Not to be reused!

INSTALLATION

Place a new Adhesive Battery 1 follow the guiding lines on the Front Assembly using a Flex Film Assembly Tool



Replacement

4.13 Adhesive Battery 2

Follow the 3.2 and 3.7 Disassembly instructions!

Follow the 4.21 Removal instructions!

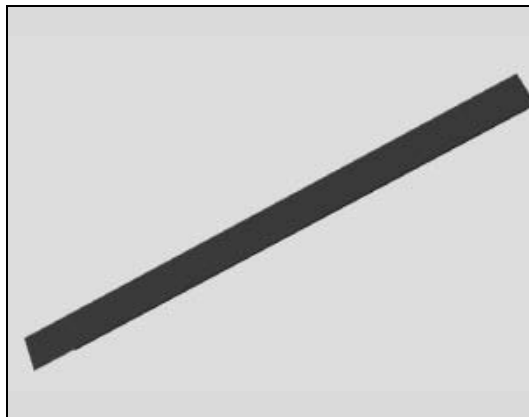
Carry out the Removal as described below!

Prepare a new Adhesive Battery 2!

Carry out the Installation as described below!

Follow the 4.21 Installation instructions!

Follow the 5.6 and 5.11 Reassembly instructions!



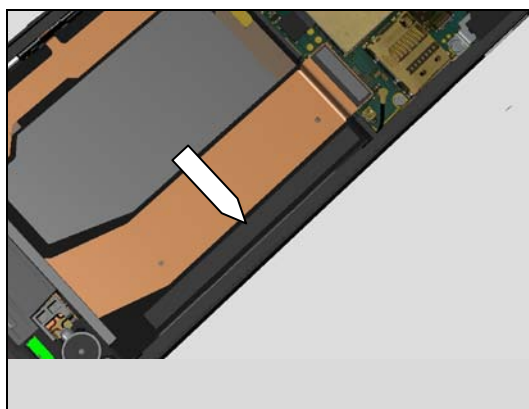
REMOVAL

Detach to remove the Adhesive Battery 2 with the Flex Film Assembly Tool.

Scrap! Not to be reused!

INSTALLATION

Place a new Adhesive Battery 2 follow the guiding lines on the Front Assembly using a Flex Film Assembly Tool



Replacement

4.14 Adhesive Conductive LCD

Follow the 3.2, 3.7 and 3.10-3.12 Disassembly instructions!

Follow the 4.21 Removal instructions!

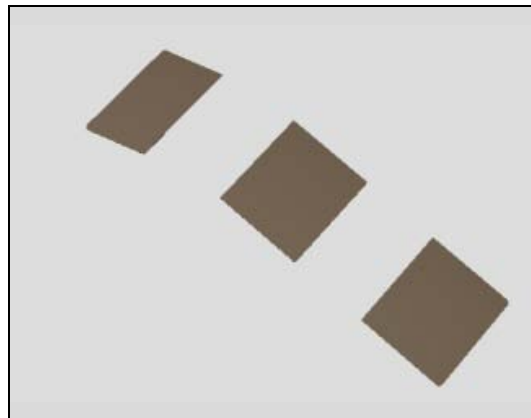
Carry out the Removal as described below!

Prepare a new Adhesive Conductive LCD!

Carry out the Installation as described below!

Follow the 4.21 Installation instructions!

Follow the 5.1-5.3, 5.6 and 5.11 Reassembly instructions!



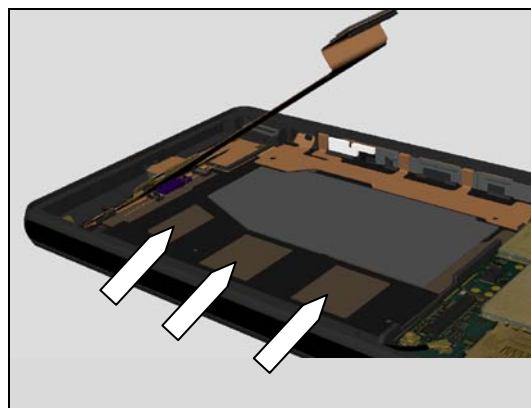
REMOVAL

Detach to remove the Adhesive Conductive LCD with the Flex Film Assembly Tool and fingers.

Scrap! Not to be reused!

INSTALLATION

Place a new Adhesive Conductive LCD follow the guiding lines on the Front Assembly using a Flex Film Assembly Tool.



Replacement

4.15 Adhesive Conductive LCD 2

Follow the 3.2, 3.7 and 3.10-3.12 Disassembly instructions!

Follow the 4.21 Removal instructions!

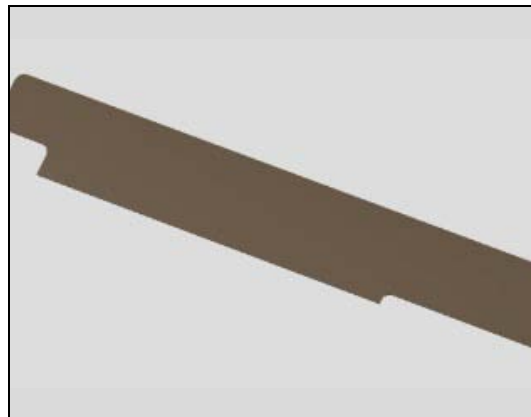
Carry out the Removal as described below!

Prepare a new Adhesive Conductive LCD 2!

Carry out the Installation as described below!

Follow the 4.21 Installation instructions!

Follow the 5.1-5.3, 5.6 and 5.11 Reassembly instructions!



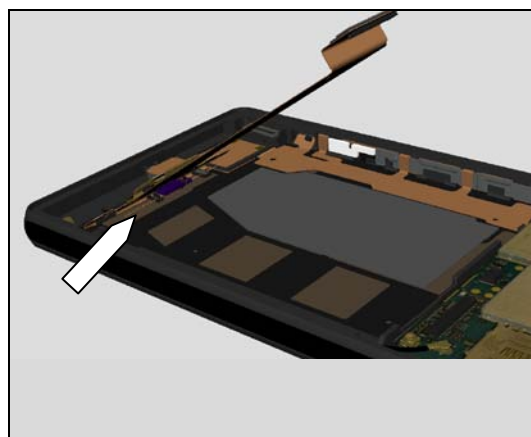
REMOVAL

Detach to remove the Adhesive Conductive LCD 2 with the Flex Film Assembly Tool and fingers.

Scrap! Not to be reused!

INSTALLATION

Place a new Adhesive Conductive LCD 2 follow the guiding lines on the Front Assembly using a Flex Film Assembly Tool.



Replacement

4.16 Adhesive FPC

Follow the 3.2, 3.7 and 3.10-3.12 Disassembly instructions!

Follow the 4.21, 4.39, 4.41 and 4.36 Removal instructions!

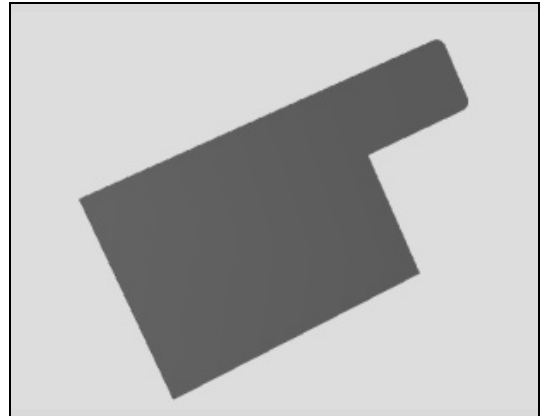
Carry out the Removal as described below!

Prepare a new Adhesive FPC

Carry out the Installation as described below!

Follow the 4.36, 4.41, 4.39 and 4.21 Installation instructions!

Follow the 5.1-5.3, 5.6 and 5.11 Reassembly instructions!



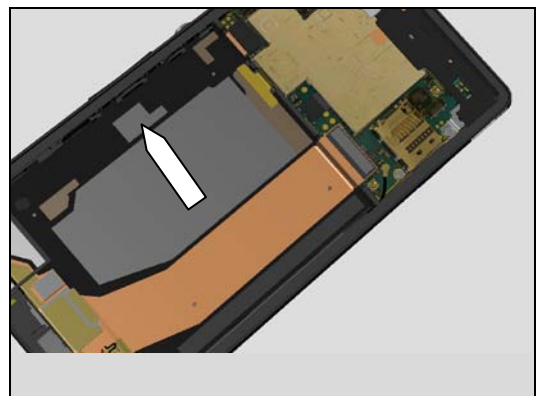
REMOVAL

Detach to remove the Adhesive FPC with the Flex Film Assembly Tool.

Scrap! Not to be reused!

INSTALLATION

Place a new Adhesive FPC follow the guiding lines on the Front Assembly using a Flex Film Assembly Tool



Replacement

4.17 Adhesive FPC A

Follow the 3.2, 3.7 and 3.10-3.12 Disassembly instructions!

Follow the 4.21, 4.39, 4.41 and 4.36 Removal instructions!

Carry out the Removal as described below!

Prepare a new Adhesive FPC A

Carry out the Installation as described below!

Follow the 4.36, 4.41, 4.39 and 4.21 Installation instructions!

Follow the 5.1-5.3, 5.6 and 5.11 Reassembly instructions!



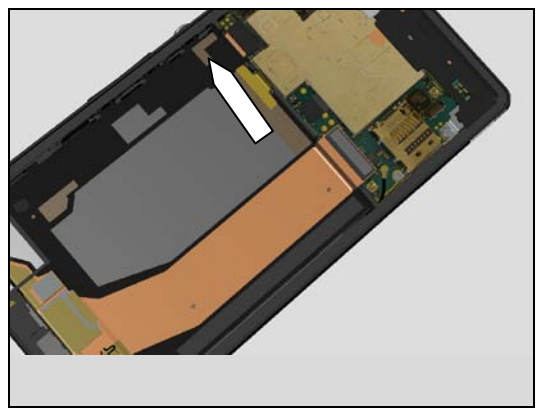
REMOVAL

Detach to remove the Adhesive FPC A with the Flex Film Assembly Tool.

Scrap! Not to be reused!

INSTALLATION

Place a new Adhesive FPC A follow the guiding lines on the Front Assembly using a Flex Film Assembly Tool



Replacement

4.18 Adhesive FPC B

Follow the 3.2, 3.7 and 3.10-3.12 Disassembly instructions!

Follow the 4.21, 4.39, 4.41 and 4.36 Removal instructions!

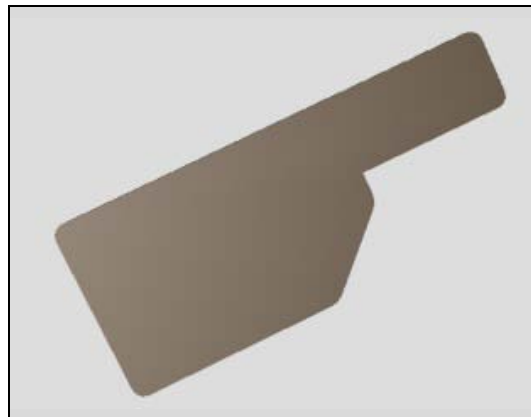
Carry out the Removal as described below!

Prepare a new Adhesive FPC B

Carry out the Installation as described below!

Follow the 4.36, 4.41, 4.39 and 4.21 Installation instructions!

Follow the 5.1-5.3, 5.6 and 5.11 Reassembly instructions!



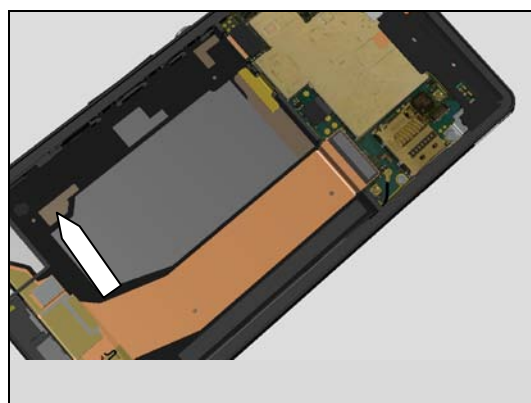
REMOVAL

Detach to remove the Adhesive FPC B with the Flex Film Assembly Tool.

Scrap! Not to be reused!

INSTALLATION

Place a new Adhesive FPC B follow the guiding lines on the Front Assembly using a Flex Film Assembly Tool



Replacement

4.19 Adhesive Receiver

Follow the 3.1-3.8 Disassembly instructions!

Follow the 4.33 Removal instructions!

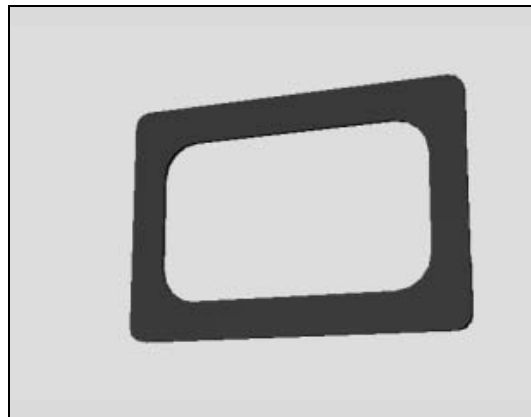
Carry out the Removal as described below!

Prepare a new Adhesive Receiver!

Carry out the Installation as described below!

Follow the 4.33 Installation instructions!

Follow the 5.5-5.12 Reassembly instructions!



REMOVAL

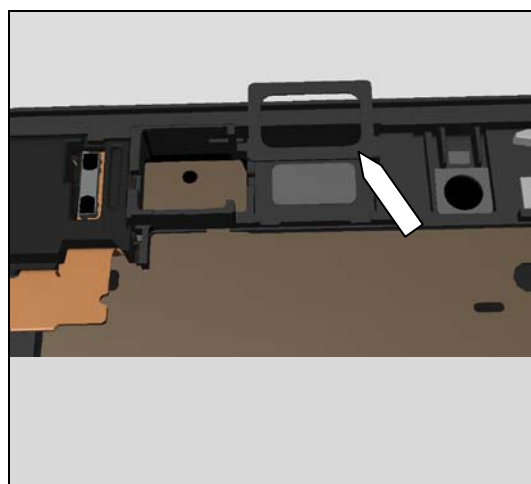
Detach to remove the Adhesive Receiver with the Flex Film Assembly Tool.

Scrap! Not to be reused!

INSTALLATION

Place a new Adhesive Receiver using a Flex Film Assembly Tool.

Important to make sure that old adhesive is removed before installation because of WRT requirement!



Replacement

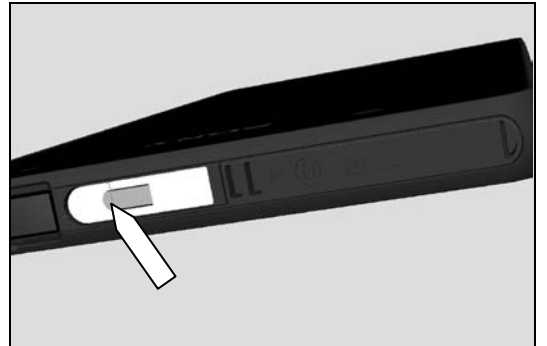
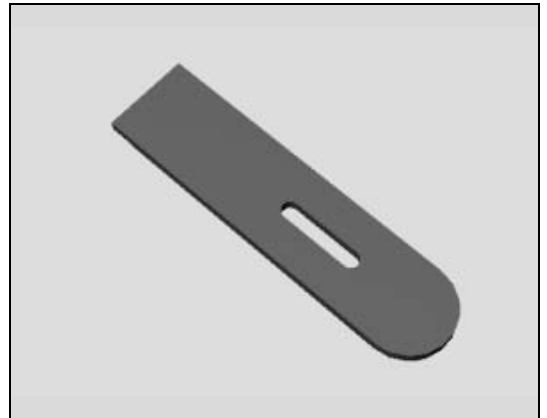
4.20 Adhesive WP Test Hole

*Follow the 4.29 and 4.30 Removal instructions!
Carry out the Removal as described below!
Prepare a new Adhesive WP Test Hole!
Carry out the Installation as described below!
Follow the 4.30 and 4.29 Installation instructions!*

REMOVAL

Detach to remove the Adhesive WP Test Hole with Dentist Hook.

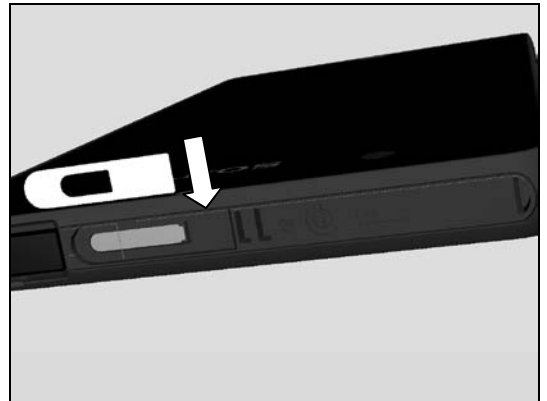
Scrap! Not to be reused!



INSTALLATION

Place a new Adhesive WP Test Hole using a Flex Film Assembly Tool.

Important to make sure that old adhesive is removed before installation because of WRT requirement!



Replacement

4.21 Battery 2330.0 mAh

Follow the 3.2 and 3.7 Disassembly instructions!
 Carry out the Removal as described below!
 Prepare a new Battery 2330.0 mAh!
 Carry out the Installation as described below!
 Follow the 5.6 and 5.11 Reassembly instructions!

REMOVAL

Set the oven temperature at approximate 55°C.

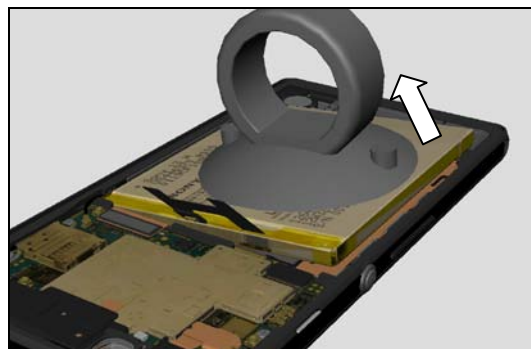
The oven temperature must below 60°C!

Place the Front Assembly into the oven with Battery 2330.0 mAh for 20 minutes.



Remove the Battery 2330.0 mAh with the Suction cup.

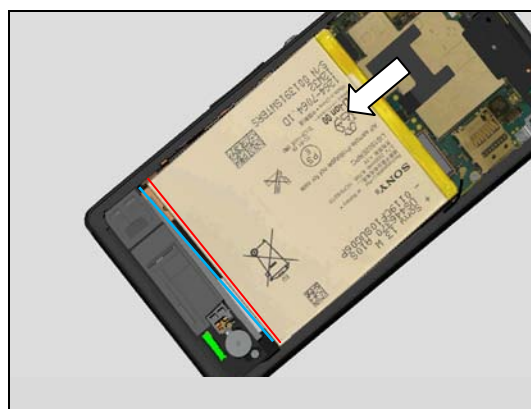
Scrap! Not to be reused!



INSTALLATION

Place a new Battery 2330.0 mAh with fingers in the Front Assembly cavity.

The bottom line of the battery and battery cavity should be paralleled.



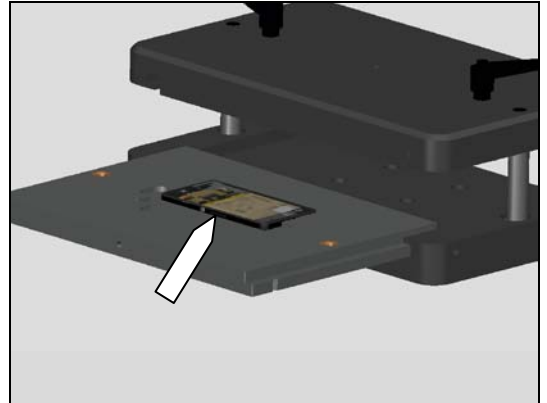
Replacement

Upper inlay = Battery inlay

Lower inlay = Back Panel press Bottom inlay

Place the phone in the Back Panel press Bottom inlay and follow the instruction in 1003-9107 Tool Catalogue – mechanical and document Toothed Rack Press Instruction for use.

Press it with a pressure value of 40N for five seconds (pressure value is adjust from 150N because of the weight of the press fixture)



Replacement

4.22 Cable RF Coax Cable, ASSY

Follow the 3.2, 3.7 and 3.10-3.12 Disassembly instructions!

Follow the 4.21 and 4.27 Removal instructions!

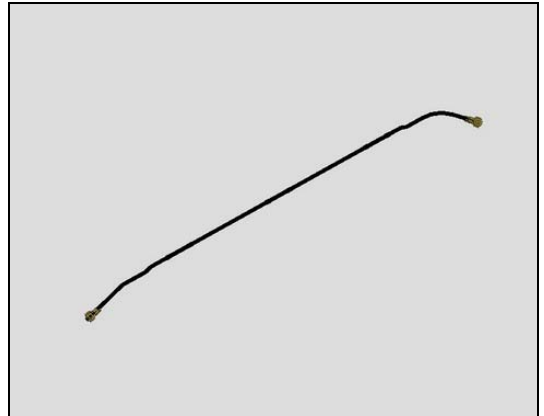
Carry out the Removal as described below!

Prepare a new Cable RF Coax Cable, ASSY!

Carry out the Installation as described below!

Follow the 4.27 and 4.21 Installation instructions!

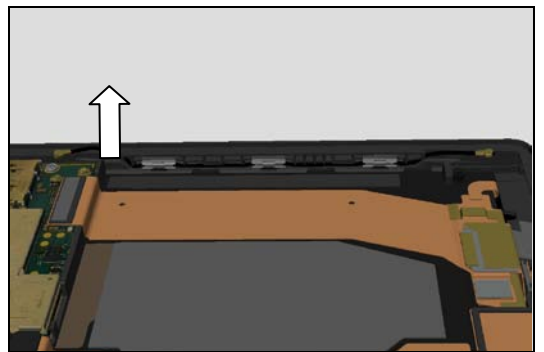
Follow the 5.1-5.3, 5.6 and 5.11 Reassembly instructions!



REMOVAL

Release the Cable RF Coax Cable, ASSY with the Flex Film Assembly Tool.

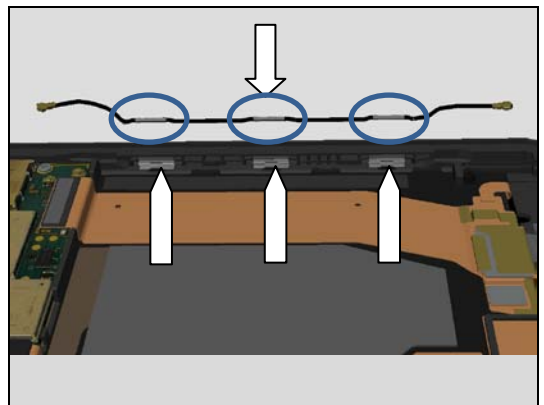
Note! Careful not to break the two connectors!



INSTALLATION

Place a new Cable RF Coax Cable, ASSY using a Flex Film Assembly Tool.

Note! Important that the silver parts of the Cable RF Coax Cable, ASSY is placed in the three sockets.



Replacement

4.23 Cap Audio Jack Assy R

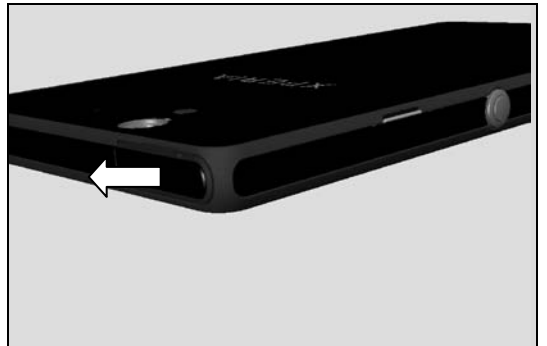
Carry out the Removal as described below!

Prepare a new Cap Audio Jack Assy R!

Carry out the Installation as described below!

REMOVAL

Pull to remove the Cap Audio Jack Assy R with fingers



INSTALLATION

Insert the pump of the new Cap Audio Jack Assy R into the hole by using a pair of Tweezers. Push it to secure its position.



Replacement

4.24 Cap SD Assy R

Carry out the Removal as described below!

Prepare a new Cap SD Assy R!

Carry out the Installation as described below!



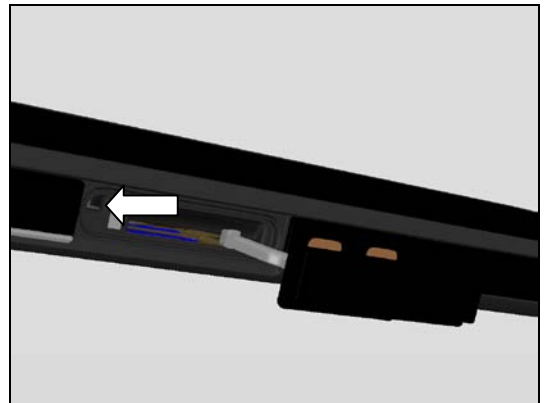
REMOVAL

Pull to remove the Cap SD Assy R with fingers



INSTALLATION

Insert the pump of the new Cap SD Assy R into the hole by using a pair of Tweezers. Push it to secure its position.



Replacement

4.25 Cap SIM Assy R

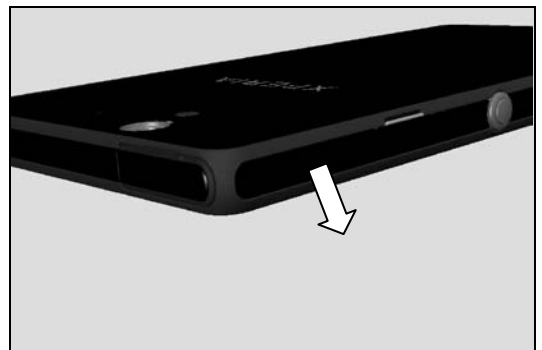
Carry out the Removal as described below!

Prepare a new Cap SIM Assy R!

Carry out the Installation as described below!

REMOVAL

Pull to remove the Cap SIM Assy R with fingers



INSTALLATION

Insert the pump of the new Cap SIM Assy R into the hole by using a pair of Tweezers. Push it to secure its position.



Replacement

4.26 Cap USB Assy R

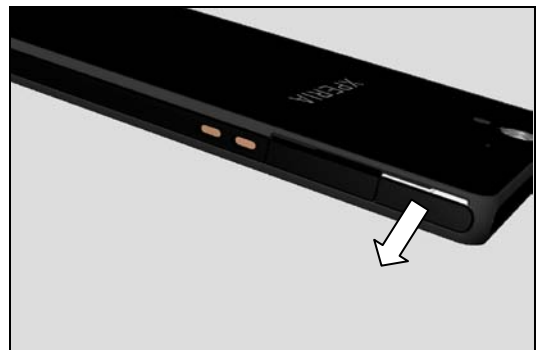
Carry out the Removal as described below!

Prepare a new Cap USB Assy R!

Carry out the Installation as described below!

REMOVAL

Pull to remove the Cap USB Assy R with fingers



INSTALLATION

Insert the pump of the new Cap USB Assy R into the hole by using a pair of Tweezers. Push it to secure its position.



Replacement

4.27 Carrier Holder Coax Cable

Follow the 3.2, 3.7 and 3.10-3.12 Disassembly instructions!

Follow the 4.21 Removal instructions!

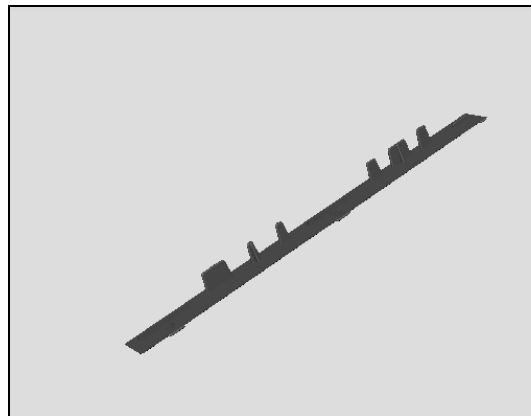
Carry out the Removal as described below!

Prepare a new Carrier Holder Coax Cable!

Carry out the Installation as described below!

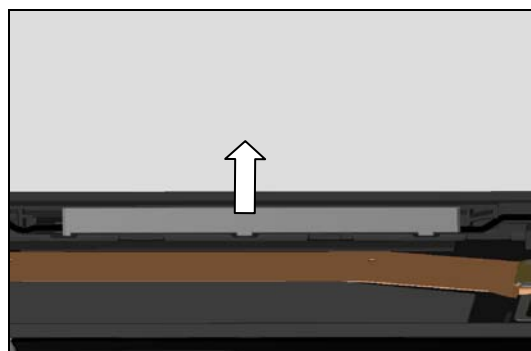
Follow the 4.21 Installation instructions!

Follow the 5.1-5.3, 5.6 and 5.11 Reassembly instructions!



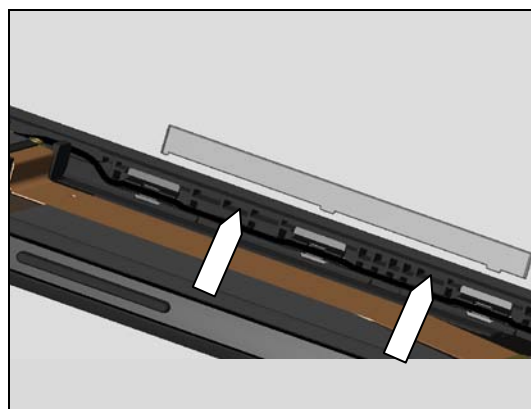
REMOVAL

Remove the Carrier Holder Coax Cable with the Flex Film Assembly Tool.



INSTALLATION

Place a new Carrier Holder Coax Cable by snap it in with fingers



Replacement

4.28 Cover Panel Bottom

Carry out the Removal as described below!

Prepare a new Cover Panel Bottom!

Follow the 4.35 Installation instructions!

Carry out the Installation as described below!

REMOVAL

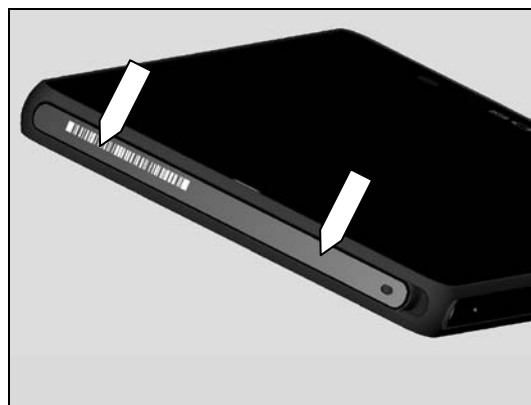
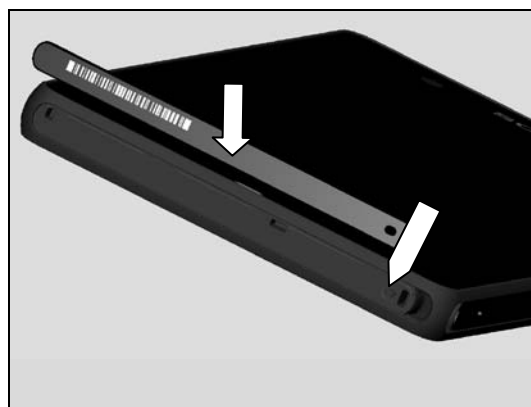
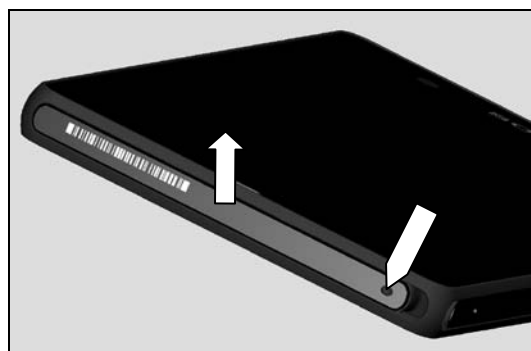
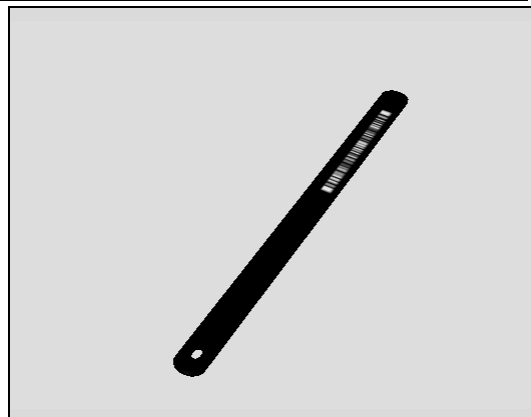
Detach to remove the Cover Panel Bottom with a Dentist Hook.

Be careful not to scratch the Cover Panel Bottom for reuse!

INSTALLATION

Place a new Cover Panel Bottom with a Flex Film Assembly Tool.

Use Side Panel press with the force of 80N for five seconds. Cover Panel Bottom should be pressed two times (see arrows) according to 1003-9107 Tool Catalogue – mechanical and document Side Panel press Instruction for use.



Replacement

4.29 Cover Panel Top

Carry out the Removal as described below!

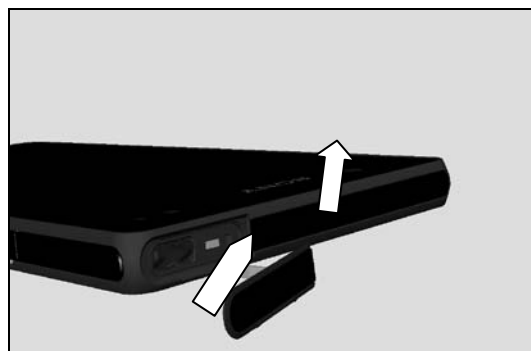
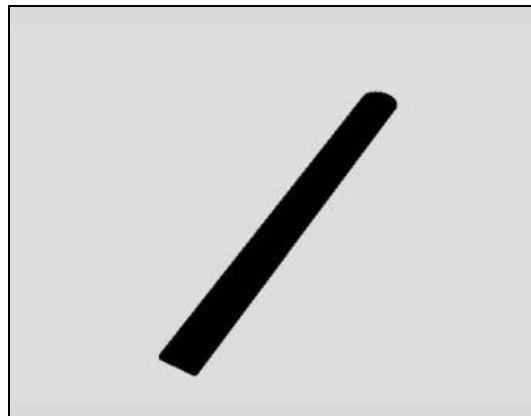
Prepare a new Cover Panel Top!

Carry out the Installation as described below!

REMOVAL

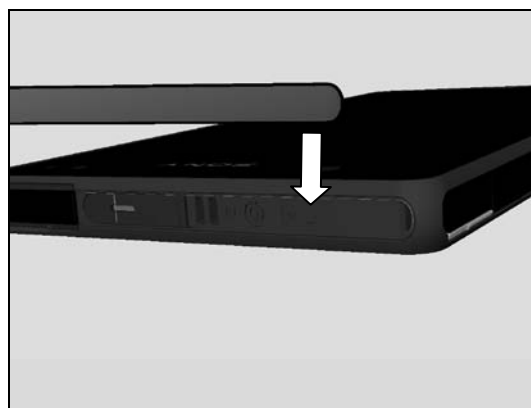
Open Cap Audio Jack Assy R and then remove the Cover Panel Top with Front Opening Tool.

Scrap! Not to be reused!

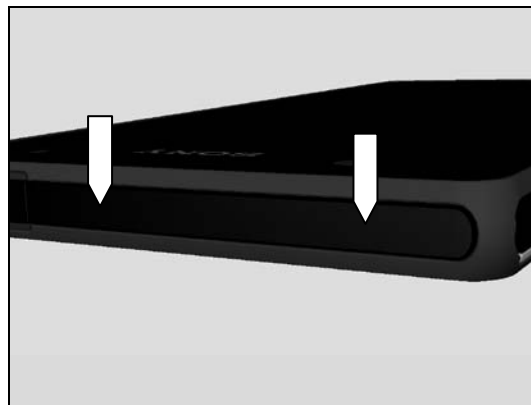


INSTALLATION

Place a new Cover Panel Top with a Flex Film Assembly Tool



Use Side Panel press with the force of 80N for five seconds. Cover Panel Top should be pressed two times (see arrows) according to 1003-9107 Tool Catalogue – mechanical and document Side Panel press Instruction for use.



Replacement

4.30 Cover WP Test Hole

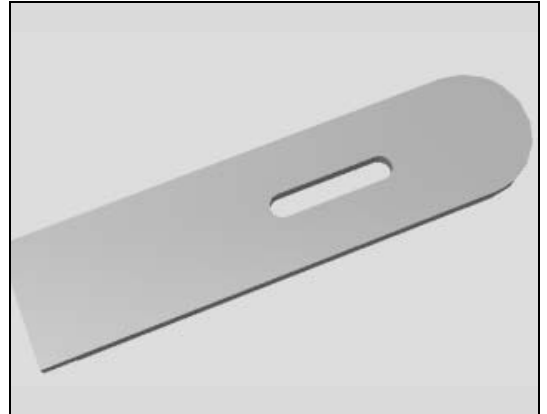
Follow the 4.29 Removal instructions!

Carry out the Removal as described below!

Prepare a new Cover WP Test Hole!

Carry out the Installation as described below!

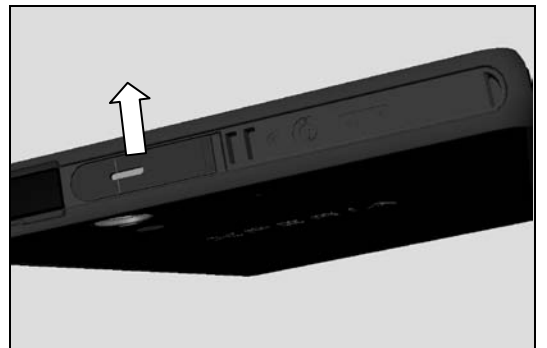
Follow the 4.20 and 4.29 Installation instructions!



REMOVAL

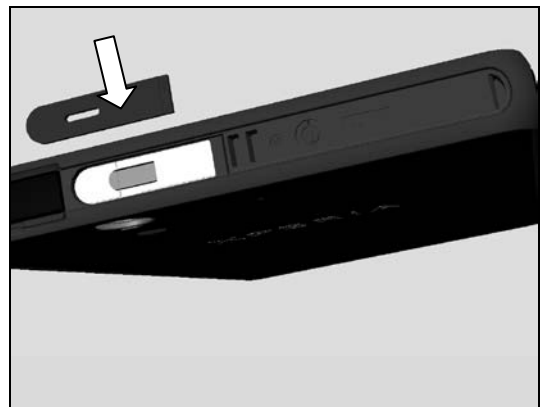
Detach to remove the Cover WP Test Hole with Dentist Hook.

Scrap! Not to be reused!



INSTALLATION

Place a new Cover WP Test Hole using a Flex Film Assembly Tool



Replacement

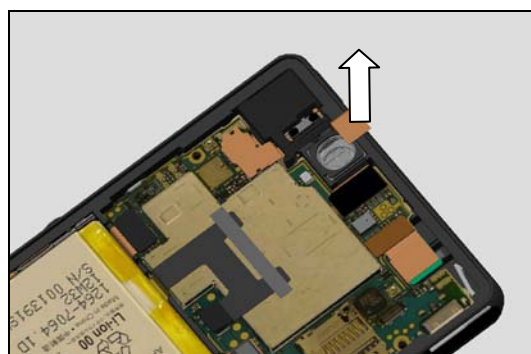
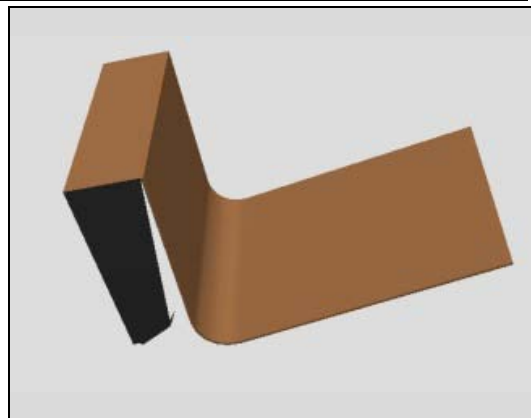
4.31 Cupper Sheet McamA

Follow the 3.2 and 3.4 Disassembly instructions!
 Carry out the Removal as described below!
 Prepare a new Cupper Sheet McamA!
 Carry out the Installation as described below!
 Follow the 5.9 and 5.11 Reassembly instructions!

REMOVAL

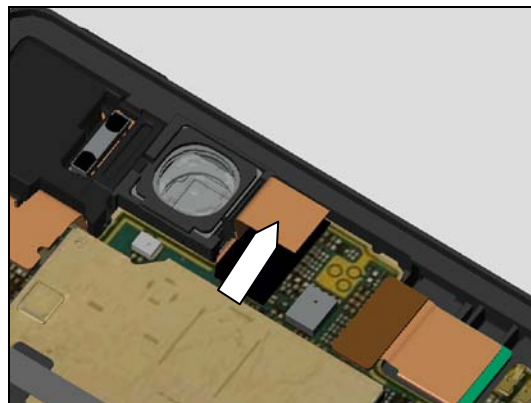
Remove the Cupper Sheet McamA with the Flex Film Assembly Tool.

Scrap! Not to be reused!

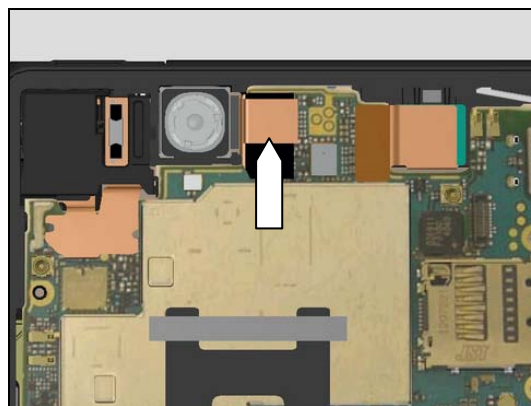


INSTALLATION

Start by placing a new Cupper Sheet McamA between camera socket and BtB connector with a Flex Film Assembly Tool



Then press it against the BtB connector



Replacement

4.32 Cushion Battery Bottom

Follow the 3.2 and 3.10-3.12 Disassembly instructions!

Carry out the Removal as described below!

Prepare a new Cushion Battery Bottom!

Carry out the Installation as described below!

Follow the 5.1-5.3 and 5.11 Reassembly instructions!

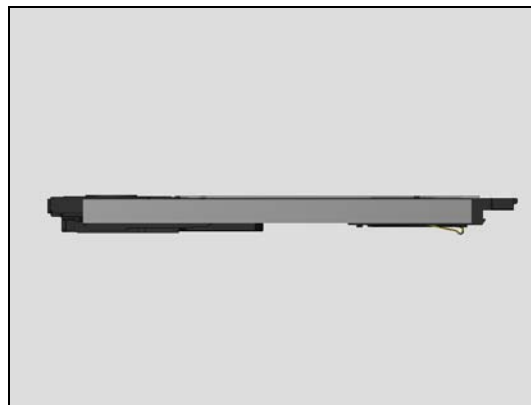
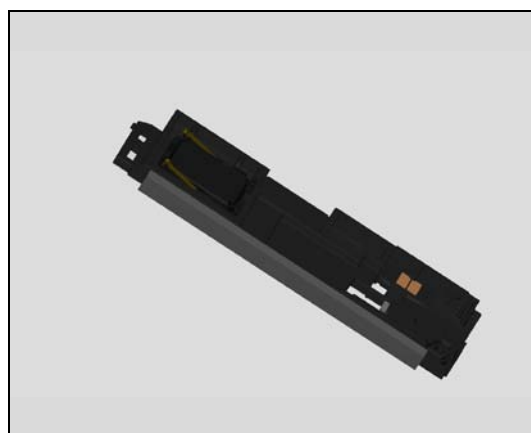
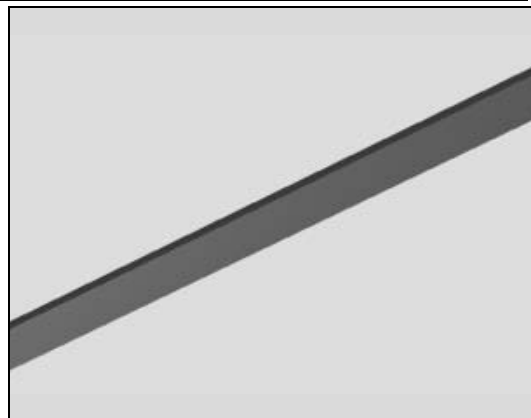
REMOVAL

Detach to remove the Cushion Battery Bottom with the Flex Film Assembly Tool.

Scrap! Not to be reused!

INSTALLATION

Place a new Cushion Battery Bottom using a Flex Film Assembly Tool



Replacement

4.33 Ear Speaker 12.0 Rectangular_WR

Follow the 3.1-3.8 Disassembly instructions!

Follow the 4.19 Removal instructions!

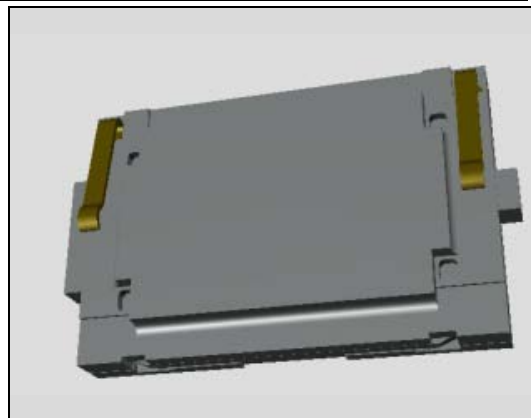
Carry out the Removal as described below!

Prepare a new Ear Speaker 12.0 Rectangular_WR!

Follow the 4.19 Installation instructions!

Carry out the Installation as described below!

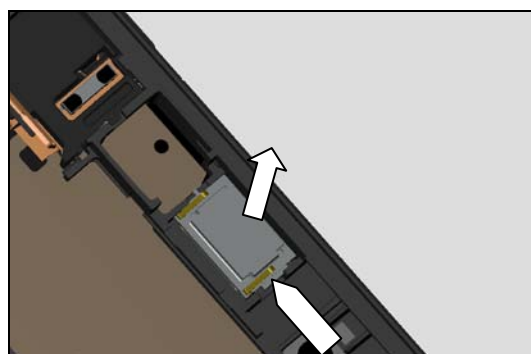
Follow the 5.5-5.12 Reassembly instructions!



REMOVAL

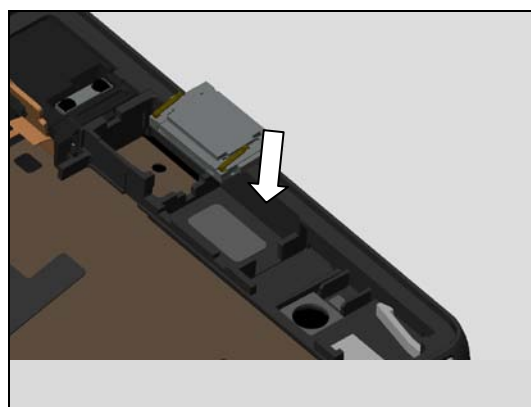
Remove the Ear Speaker 12.0 Rectangular_WR with Nylon Pointer

Scrap! Not to be reused!



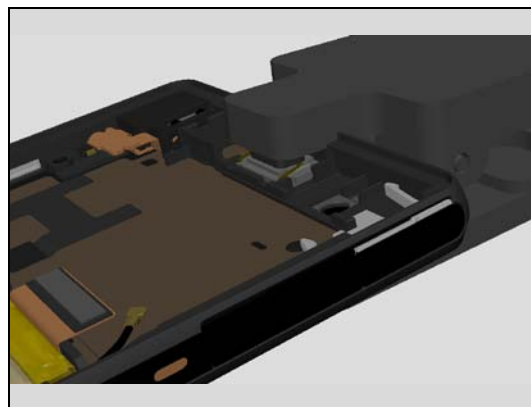
INSTALLATION

Place a new Ear Speaker 12.0 Rectangular_WR with fingers



Press to secure its attachment by using Press Tool Loudspeaker for five seconds.

Do not touch the contact pins!



Replacement

4.34 Foil Adhesive Back Panel

Follow the 3.2 Disassembly instructions!

Carry out the Removal as described below!

Prepare a new Foil Adhesive Back Panel!

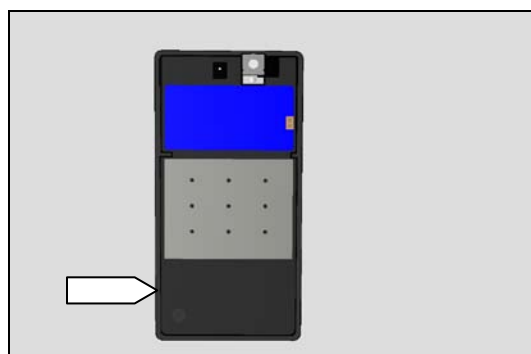
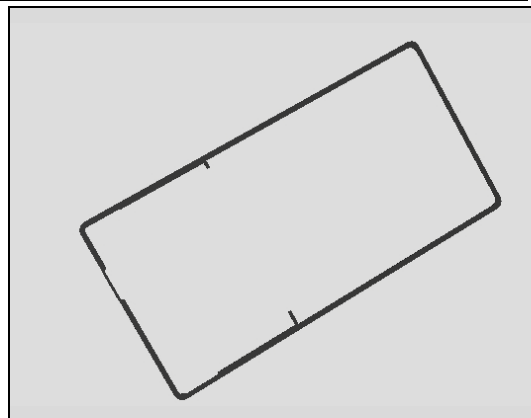
Carry out the Installation as described below!

Follow the 5.11 Reassembly instructions!

REMOVAL

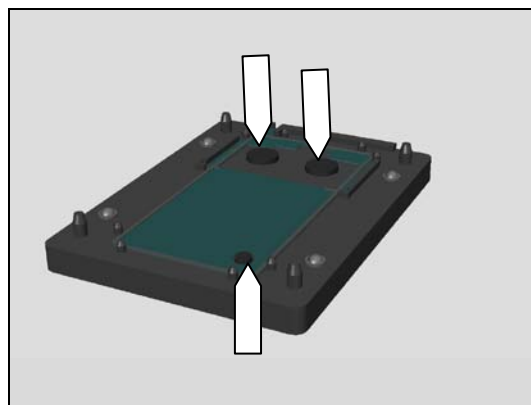
Remove the Foil Adhesive Back Panel with the Flex Film Assembly Tool.

Scrap! Not to be reused!



INSTALLATION

Place a new Foil Adhesive Back Panel with fingers in the Back Panel Adhesive fixture (Bottom Part). Use the three guiding holes.



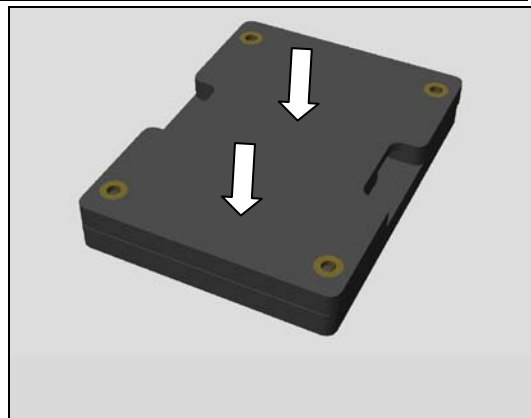
Then place the old Back Panel above the Foil Adhesive Back Panel.

Important to make sure that old adhesive is removed before installation because of WRT requirement!



Replacement

Place the Upper part of the fixture and press by hand



Replacement

4.35 Foil Adhesive Double

Follow the 4.28 Removal instructions!
Carry out the Removal as described below!
Prepare a new Foil Adhesive Double!
Carry out the Installation as described below!
Follow the 4.28 Installation instructions!

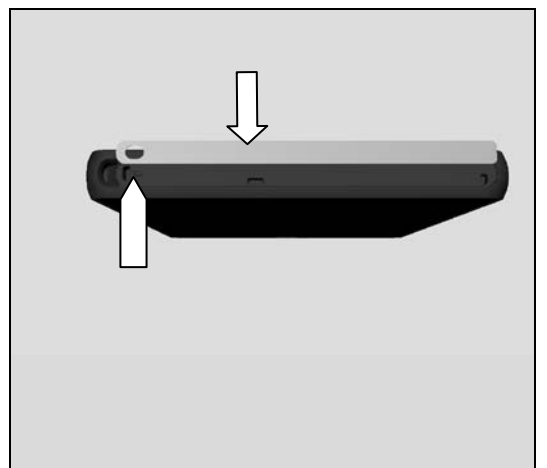
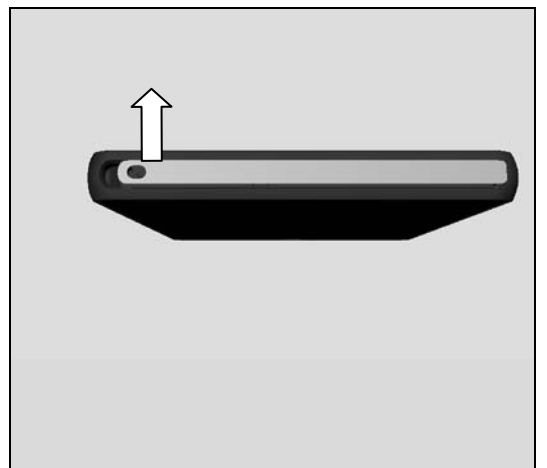
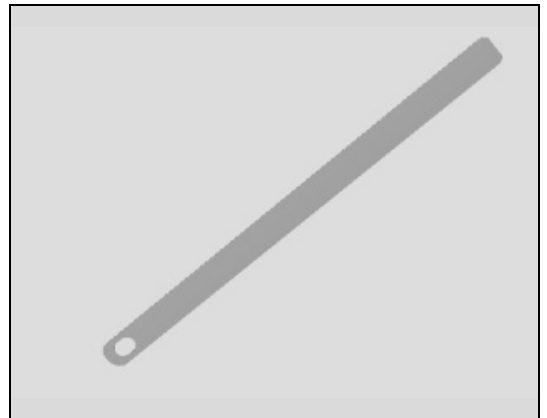
REMOVAL

Detach to remove the Foil Adhesive Double with a Dentist Hook.

Scrap! Not to be reused!

INSTALLATION

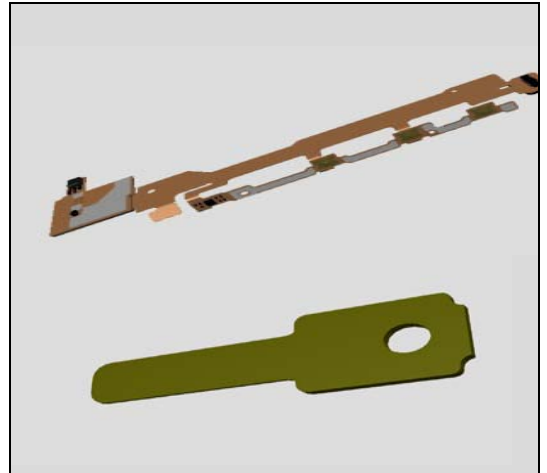
Place a new Foil Adhesive Double using a Flex Film Assembly Tool.



Replacement

4.36 FPC Assembly Relay FPC & Foil Adhesive Double Side 0.0 mmWP

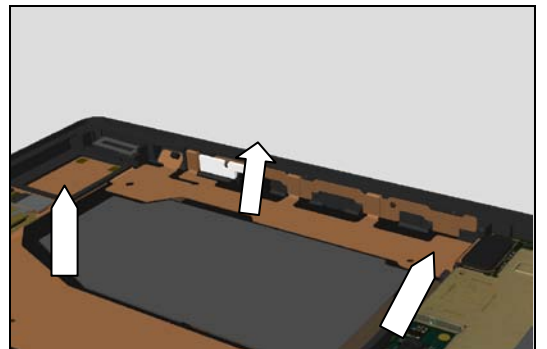
Follow the 3.2, 3.7 and 3.10-3.12 Disassembly instructions!
 Follow the 4.21, 4.39 and 4.41 Removal instructions!
 Carry out the Removal as described below!
 Prepare a new FPC Assembly Relay FPC and Foil Adhesive Double Side 0.0 mmWP
 Carry out the Installation as described below!
 Follow the 4.41, 4.39 and 4.21 Installation instructions!
 Follow the 5.1-5.3, 5.6 and 5.11 Reassembly instructions!



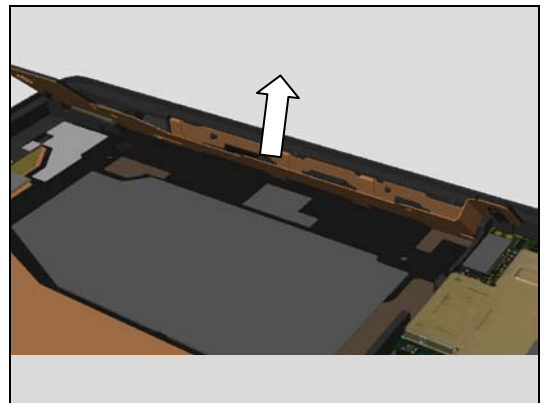
REMOVAL

Remove the FPC Assembly Relay FPC with the Flex Film Assembly Tool.

Scrap! Not to be reused!

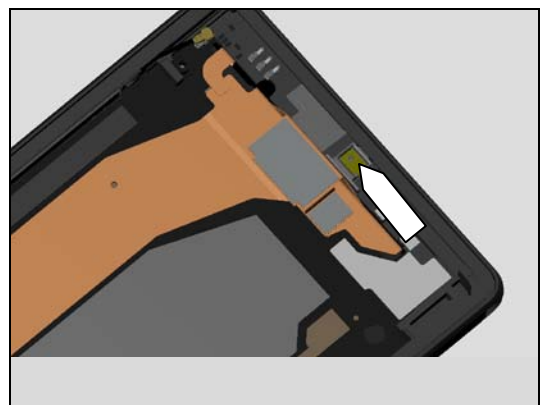


Remove it



Remove Foil Adhesive Double Side 0.0 mmWP

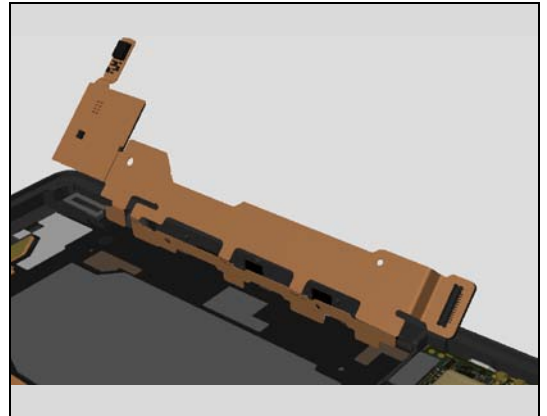
Scrap! Not to be reused!



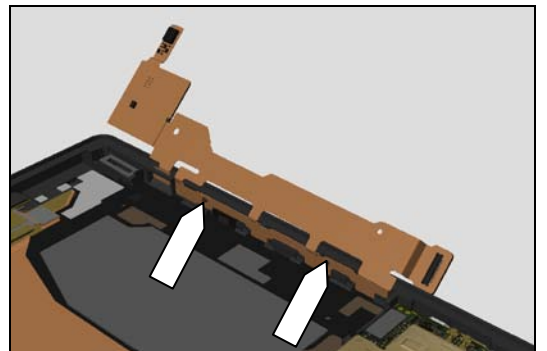
Replacement

INSTALLATION

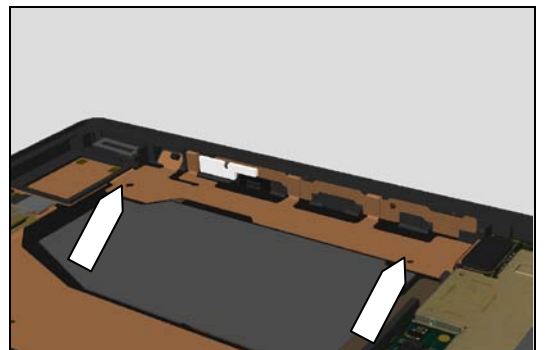
Place a new FPC Assembly Relay FPC using a Flex Film Assembly Tool.



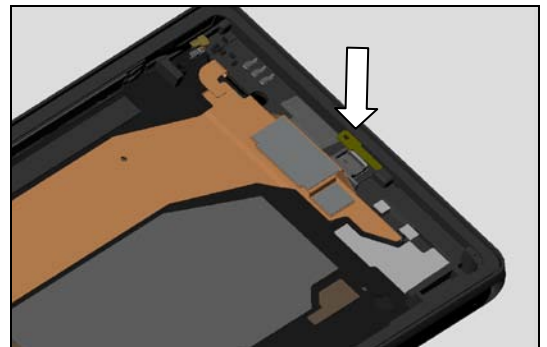
Press to secure its position to frame side.



Press to secure its position.



Place a new Foil Adhesive Double Side 0.0 mmWP using a Flex Film Assembly Tool



Replacement

4.37 Front Assembly

Follow the 3.1-3.12 Disassembly instructions!

Follow the 4.21, 4.28, 4.29, 4.27, 4.22, 4.39, 4.41 and 4.36 Removal instructions!

Carry out the Removal as described below!

Prepare a new Front Assembly!

Carry out the Installation as described below!

Follow the 4.36, 4.41, 4.39, 4.22, 4.27, 4.29, 4.28 and 4.21 Installation instructions!

Follow the 5.1-5.12 Reassembly instructions!



Replacement

4.38 Loudspeaker 15.0 Rectangular

Follow the 3.2 and 3.10-3.12 Disassembly instructions!

Carry out the Removal as described below!

Prepare a new Loudspeaker 15.0 Rectangular!

Carry out the Installation as described below!

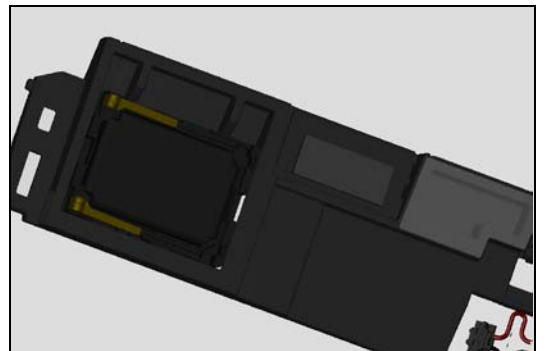
Follow the 5.1-5.3 and 5.11 Reassembly instructions!



REMOVAL

Remove the Loudspeaker 15.0 Rectangular with a Dentist Hook.

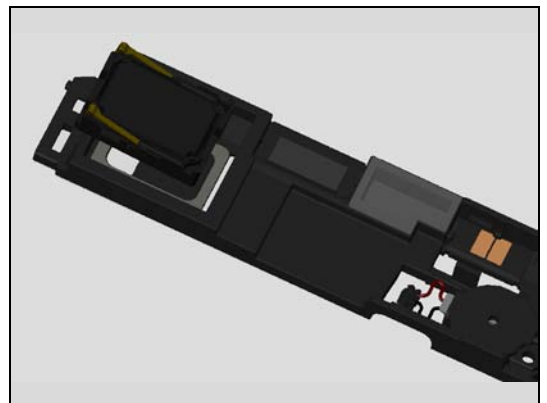
Scrap the Loudspeaker 15.0 Rectangular and Ant Main Flex RoW! Not to be reused!



INSTALLATION

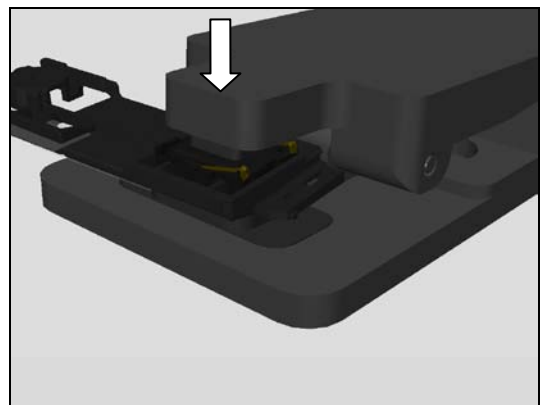
Place a new Loudspeaker 15.0 Rectangular with fingers.

Important to make sure using an new Ant Main Flex RoW before installation because of WRT requirement!



Press to secure its attachment by using Press Tool Loudspeaker for five seconds.

Do not touch the contact pins!



Replacement

4.39 Mcomp Sheet relay FPC

Follow the 3.2, 3.7 and 3.10-3.12 Disassembly instructions!

Follow the 4.21 Removal instructions!

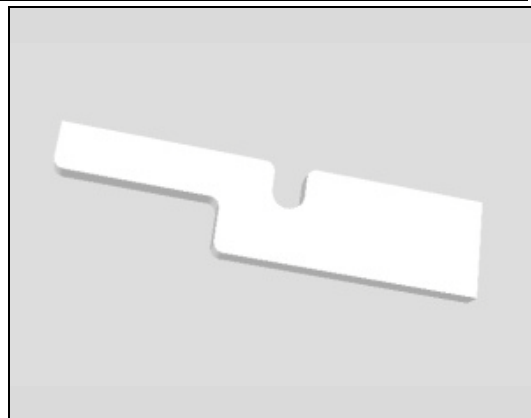
Carry out the Removal as described below!

Prepare a new Mcomp Sheet relay FPC

Carry out the Installation as described below!

Follow the 4.21 Installation instructions!

Follow the 5.1-5.3, 5.6 and 5.11 Reassembly instructions!

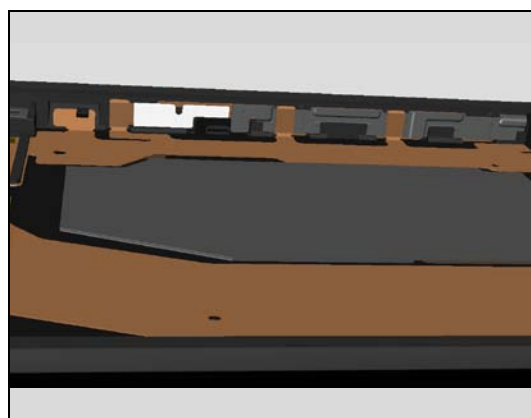


REMOVAL

Detach to remove the Mcomp Sheet relay FPC with the Flex Film Assembly Tool.

INSTALLATION

Place a new Mcomp Sheet relay FPC using a Flex Film Assembly Tool



Replacement

4.40 Mesh Receiver

Follow the 3.1-3.8 Disassembly instructions!

Follow the 4.33 and 4.19 Removal instructions!

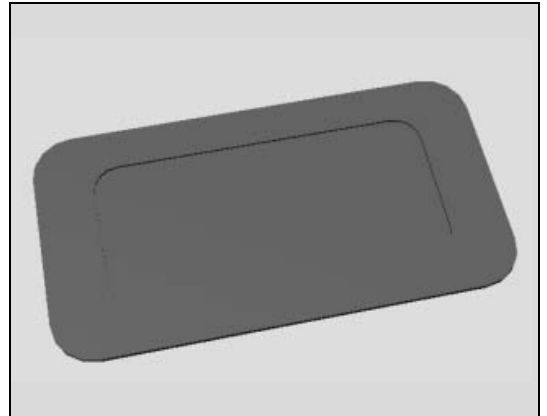
Carry out the Removal as described below!

Prepare a new Mesh Receiver!

Carry out the Installation as described below!

Follow the 4.19 and 4.33 Installation instructions!

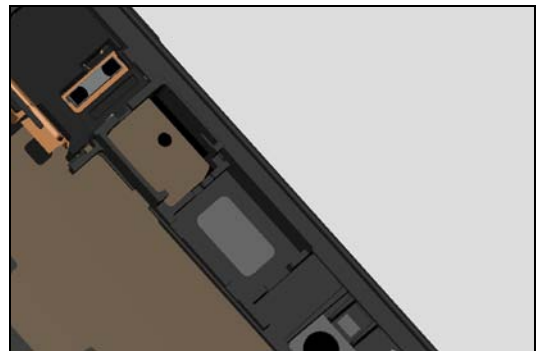
Follow the 5.5-5.12 Reassembly instructions!



REMOVAL

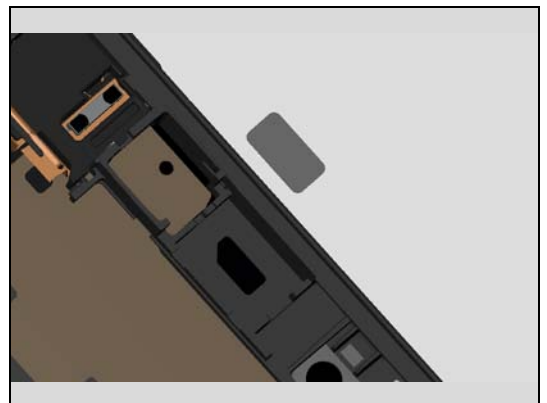
Detach to remove the Mesh Receiver with Dentist Hook.

Scrap! Not to be reused!



INSTALLATION

Place a new Mesh Receiver using a Flex Film Assembly Tool



Replacement

4.41 Plate Side Key

Follow the 3.2, 3.7 and 3.10-3.12 Disassembly instructions!

Follow the 4.21 Removal instructions!

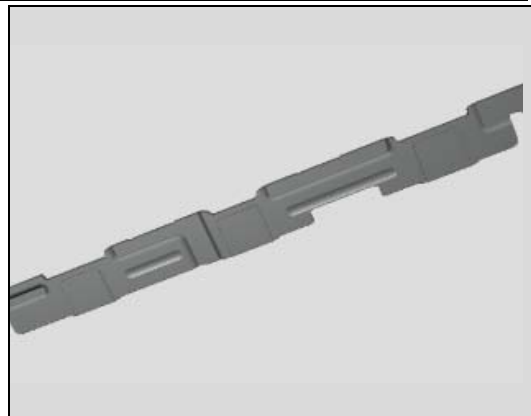
Carry out the Removal as described below!

Prepare a new Plate Side Key!

Carry out the Installation as described below!

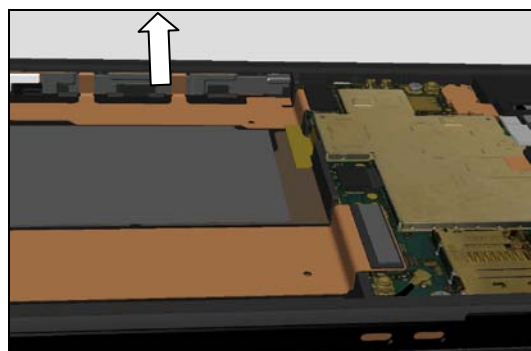
Follow the 4.21 Installation instructions!

Follow the 5.1-5.3, 5.6 and 5.11 Reassembly instructions!



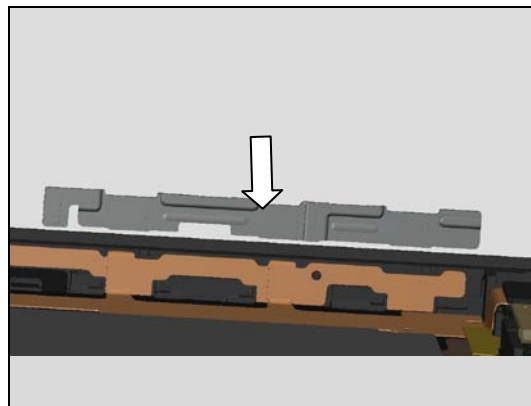
REMOVAL

Remove the Plate Side Key with a pair of tweezers.

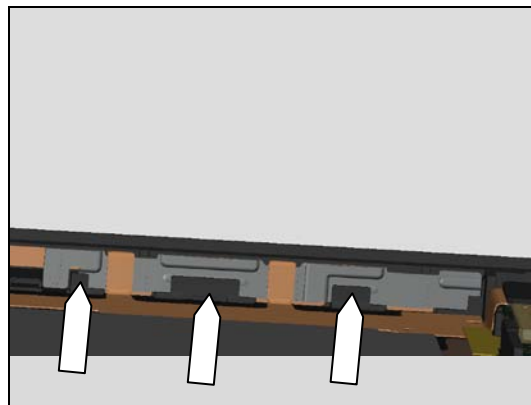


INSTALLATION

Place a new Plate Side Key using a Flex Film Assembly Tool



Make sure the Plate Side Key is correct mounted in the three slots.



Replacement

4.42 Sheet BtB LCD

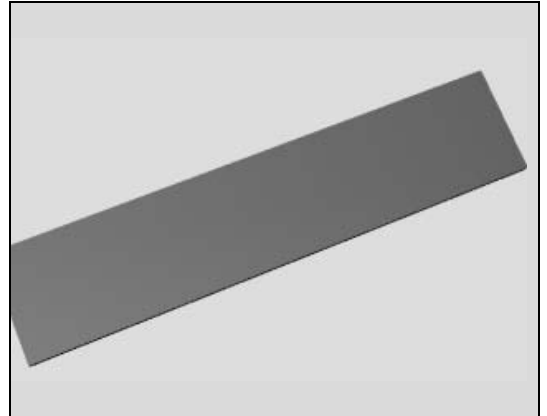
Follow the 3.2 Disassembly instructions!

Carry out the Removal as described below!

Prepare a new Sheet BtB LCD!

Carry out the Installation as described below!

Follow the 5.11 Reassembly instructions!



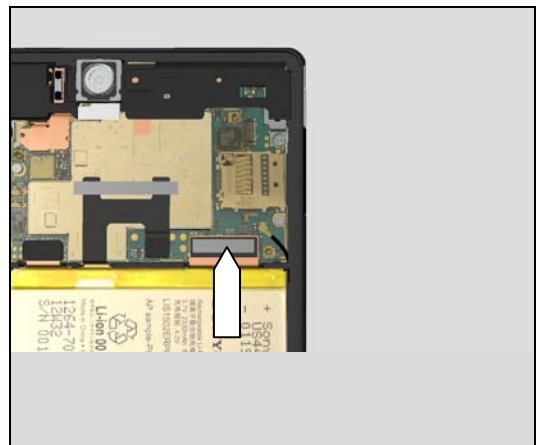
REMOVAL

Detach to remove the Sheet BtB LCD with the Flex Film Assembly Tool.

Scrap! Not to be reused!

INSTALLATION

Place a new Sheet BtB LCD on LCD BtB connector using a Flex Film Assembly Tool



Replacement

4.43 Sheet WP Test Hole

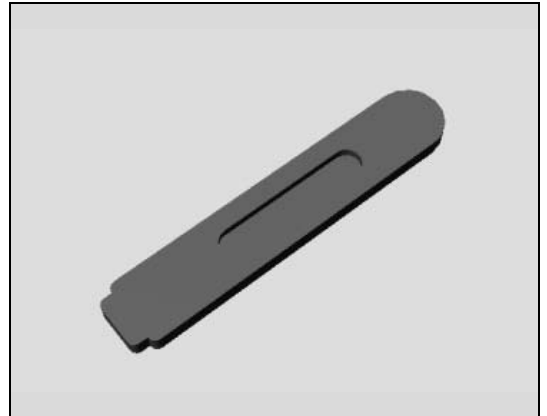
Follow the 4.29, 4.30 and 4.20 Removal instructions!

Carry out the Removal as described below!

Prepare a new Sheet WP Test Hole!

Carry out the Installation as described below!

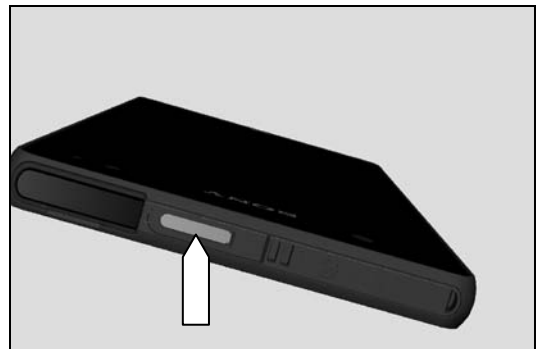
Follow the 4.20, 4.30 and 4:29 Installation instructions!



REMOVAL

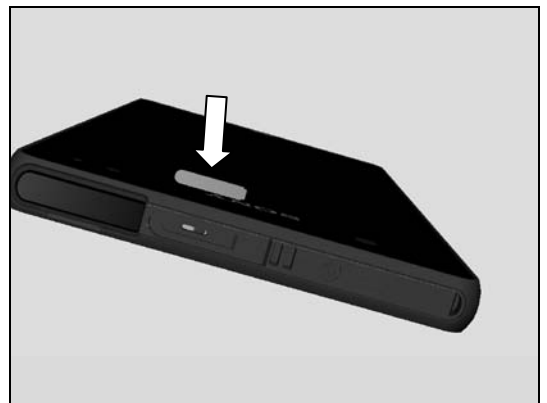
Detach to remove the Sheet WP Test Hole with Dentist Hook.

Scrap! Not to be reused!



INSTALLATION

Place a new Sheet WP Test Hole using a Flex Film Assembly Tool



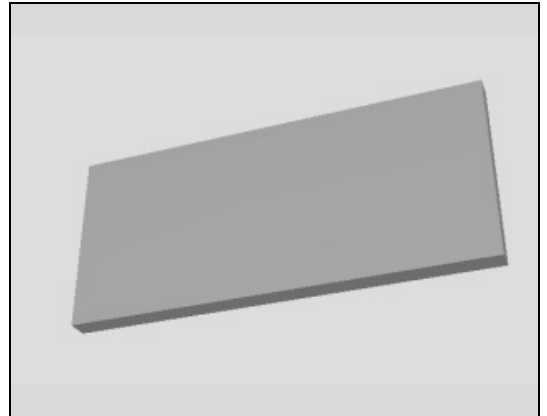
Replacement

4.44 Water Indicator

Carry out the Removal as described below!

Prepare a new Water Indicator!

Carry out the Installation as described below!



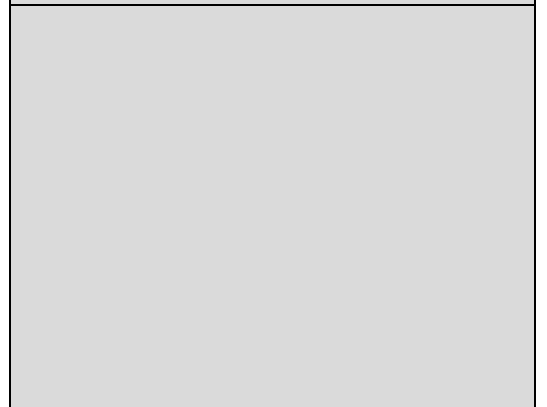
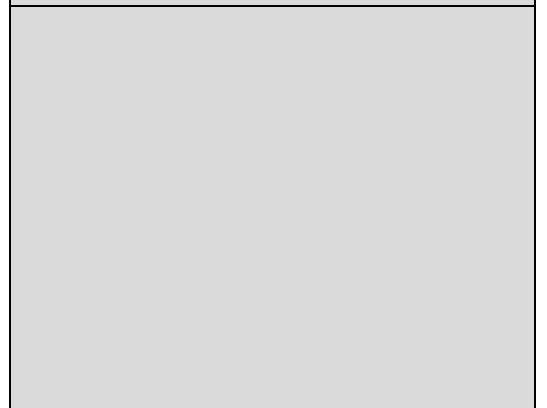
REMOVAL

Detach to remove the Water Indicator with a Dentist Hook

Scrap! Not to be reused!

INSTALLATION

Place a new Water Indicator follow the guiding lines on the Front Assembly using a Flex Film Assembly Tool



Replacement

4.45 Vibrator

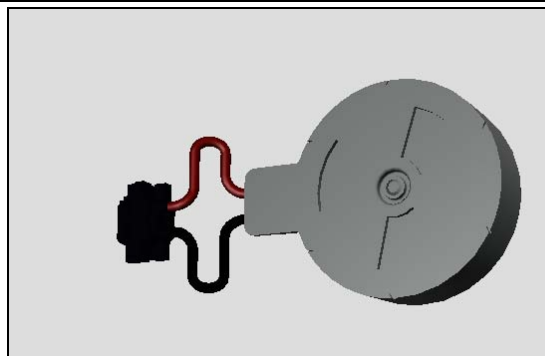
Follow the 3.2 and 3.10 Disassembly instructions!

Carry out the Removal as described below!

Prepare a new Vibrator!

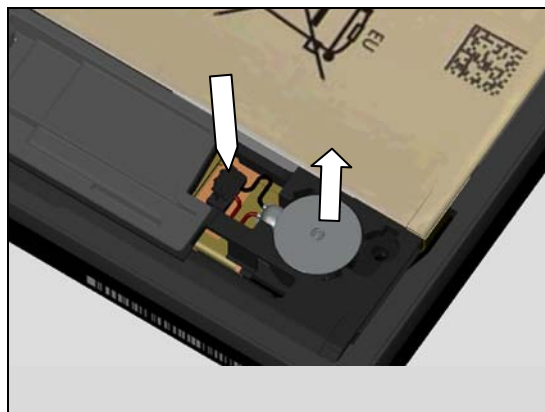
Carry out the Installation as described below!

Follow the 5.3 and 5.11 Reassembly instructions!



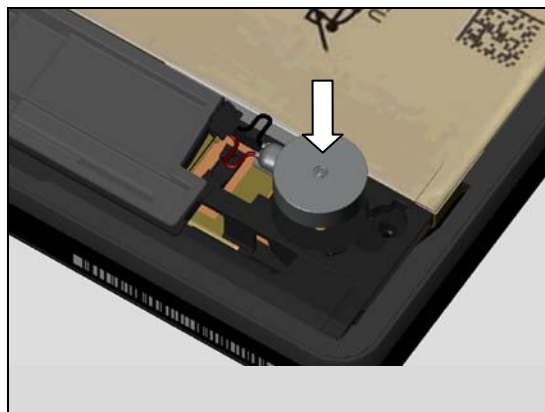
REMOVAL

Use a Front Opening Tool to disconnect the Vibrator. Then remove the Vibrator using a Front Opening Tool.

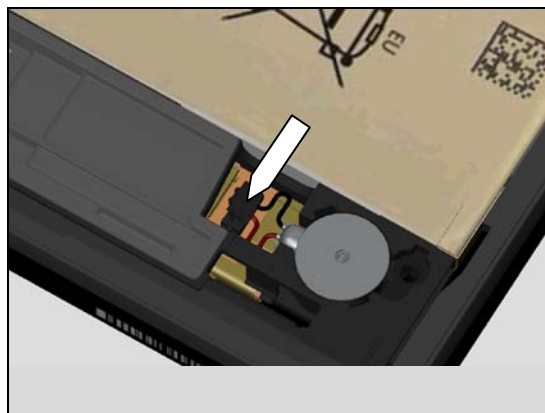


INSTALLATION

Place a new Vibrator in the cavity.



Press the contact of Vibrator to secure its attachment with a Front Opening Tool.



Replacement

4.46 Adhesive Double Side 0.0 mmWP Speaker

Follow the 3.2 and 3.10-3.12 Disassembly instructions!

Carry out the Removal as described below!

Prepare a Adhesive Double Side 0.0 mmWP Speaker!

Carry out the Installation as described below!

Follow the 5.1-5.3 and 5.11 Reassembly instructions!

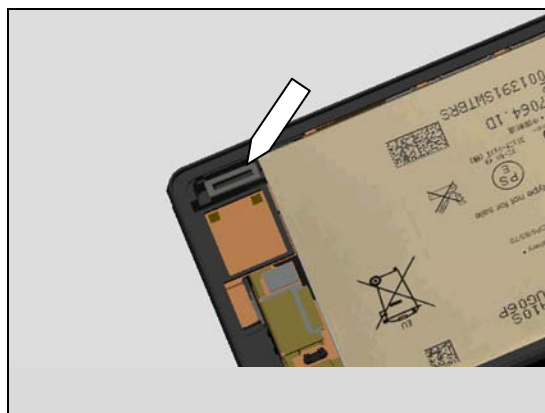
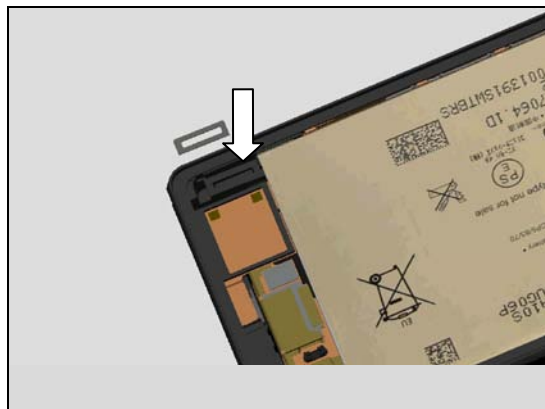
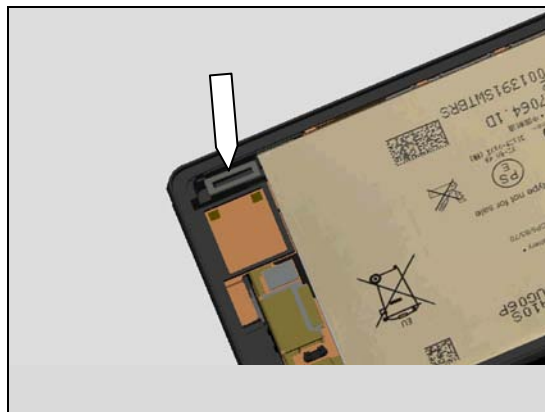
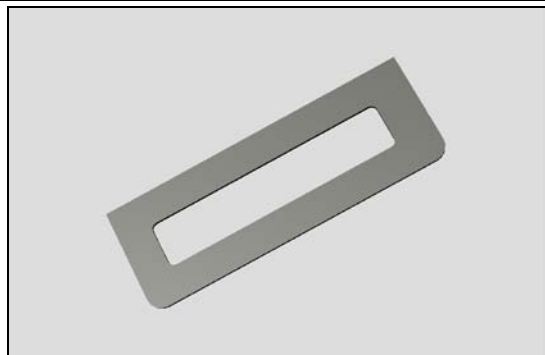
REMOVAL

Detach to remove the Adhesive Double Side 0.0 mmWP Speaker with Dentist Hook.

Scrap! Not to be reused!

INSTALLATION

Place a new Adhesive Double Side 0.0 mmWP Speaker using a Flex Film Assembly Tool



Replacement

4.47 Carrier Holder 1st Mic

Follow the 3.2, 3.7 and 3.10-3.12 Disassembly instructions!

Follow the 4.21, 4.39, 4.41 and 4.36 Removal instructions!

Carry out the Removal as described below!

Prepare a new Carrier Holder 1st Mic!

Carry out the Installation as described below!

Follow the 4.48, 4.36, 4.41, 4.39, 4.36 and 4.21 Installation instructions!

Follow the 5.1-5.3, 5.6 and 5.11 Reassembly instructions!

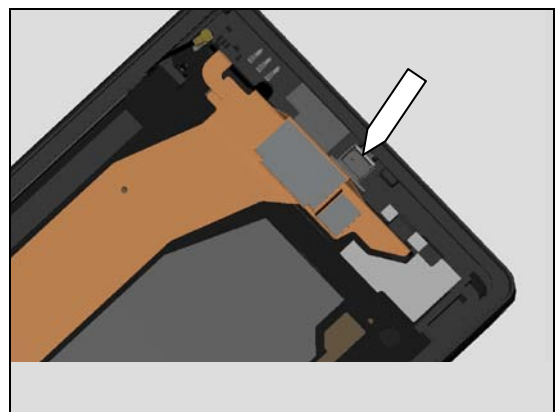
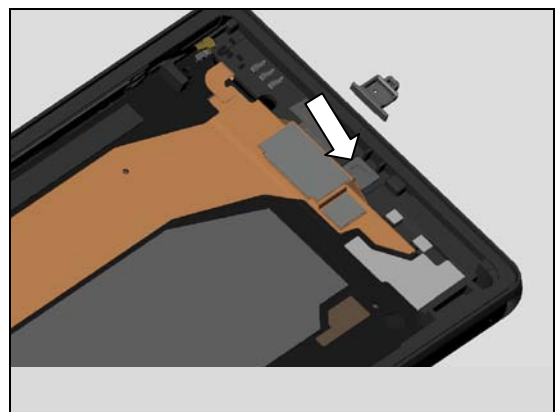
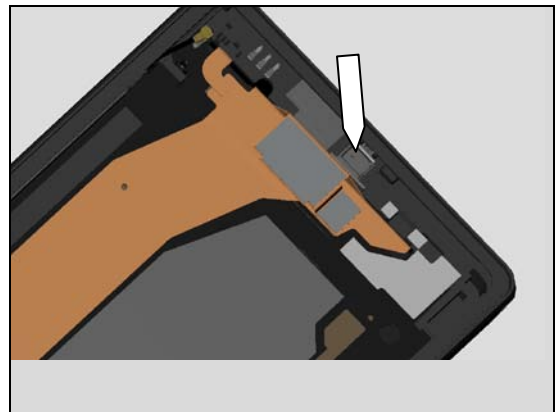
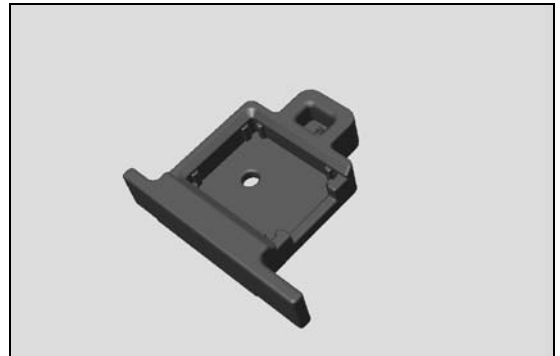
REMOVAL

Detach to remove the Carrier Holder 1st Mic with Dentist Hook.

Scrap! Not to be reused!

INSTALLATION

Place a new Carrier Holder 1st Mic using a Flex Film Assembly Tool



Replacement

4.48 MComp Sheet WP 1st Mic

*Follow the 3.2, 3.7 and 3.10-3.12 Disassembly instructions!
Follow the 4.21, 4.39, 4.41 and 4.36, 4.48 Removal instructions!*

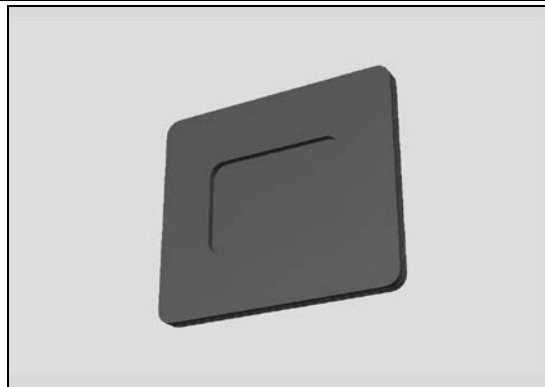
Carry out the Removal as described below!

Prepare a new Carrier Holder 1st Mic!

Carry out the Installation as described below!

Follow the 4.48, 4.36, 4.41, 4.39, 4.36 and 4.21 Installation instructions!

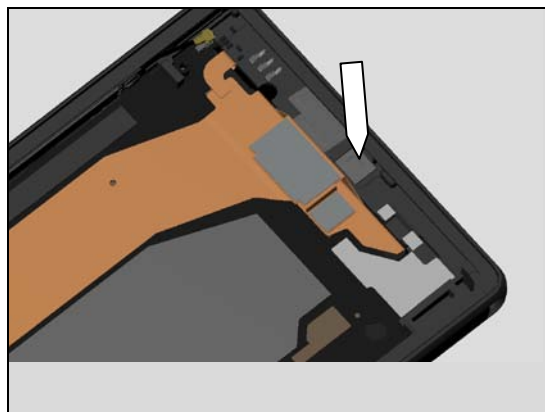
Follow the 5.1-5.3, 5.6 and 5.11 Reassembly instructions!



REMOVAL

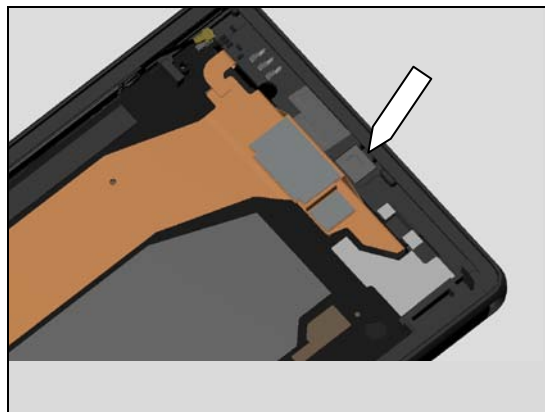
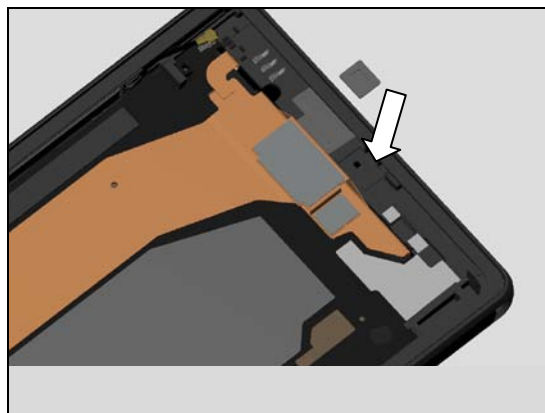
Detach to remove the MComp Sheet WP 1st Mic with Dentist Hook.

Scrap! Not to be reused!



INSTALLATION

Place a new MComp Sheet WP 1st Mic using a Flex Film Assembly Tool



Replacement

4.49 Cover Panel Right Bottom

Carry out the Removal as described below!

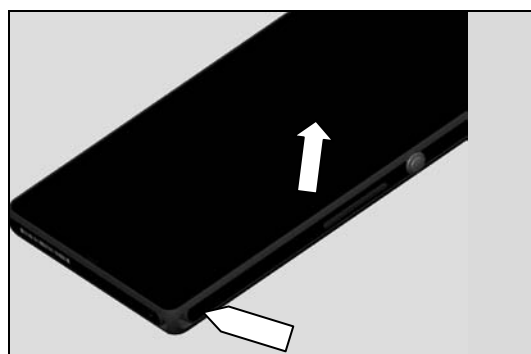
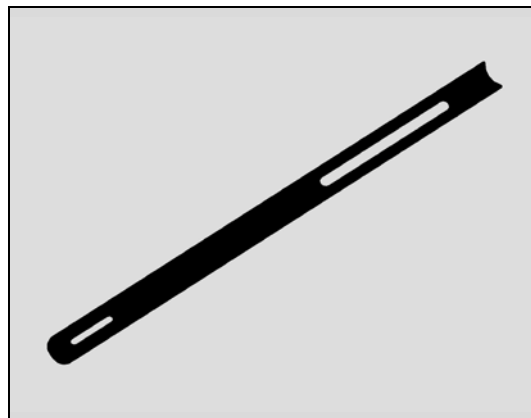
Prepare a new Cover Panel Right Bottom!

Carry out the Installation as described below!

REMOVAL

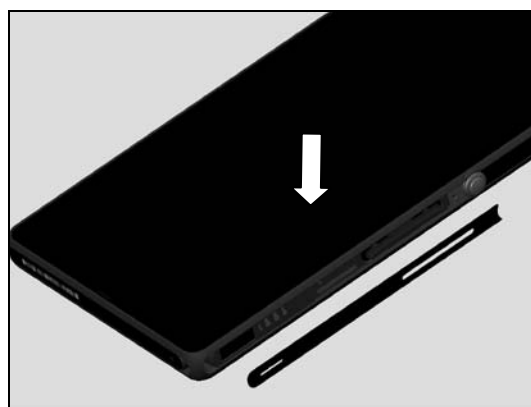
Detach to remove the Cover Panel Right Bottom with a Dentist Hook.

Scrap! Not to be reused!

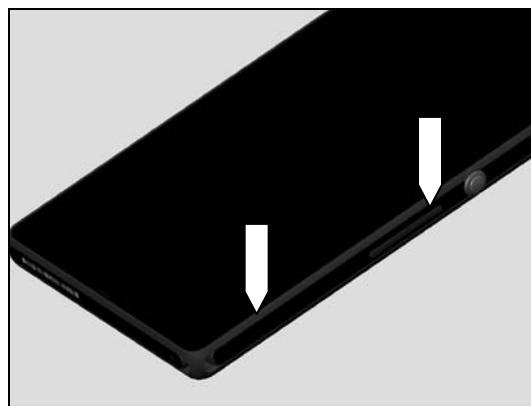


INSTALLATION

Place a new Cover Panel Right Bottom with a Flex Film Assembly Tool



Use Side Panel press with the force of 80N for five seconds. The pressure is just put around the loud speaker hole and under the volume key Cover Panel Top, it should be pressed two times (see arrows) according to 1003-9107 Tool Catalogue – mechanical and document Side Panel press Instruction for use. Then use fingers to press the Cover Panel Right Bottom around the volume key and the part above power key.



Replacement

4.50 Mesh Loud Speaker

Follow the 4.49 Removal instructions!

Carry out the Removal as described below!

Prepare a new Mesh Loud Speaker!

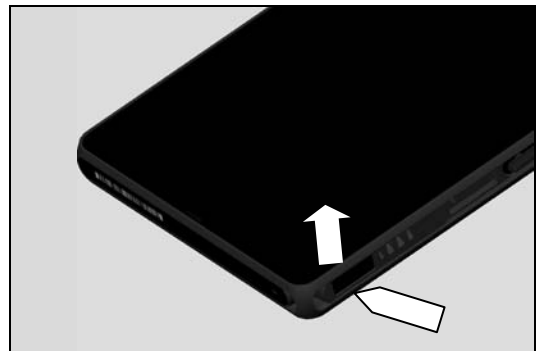
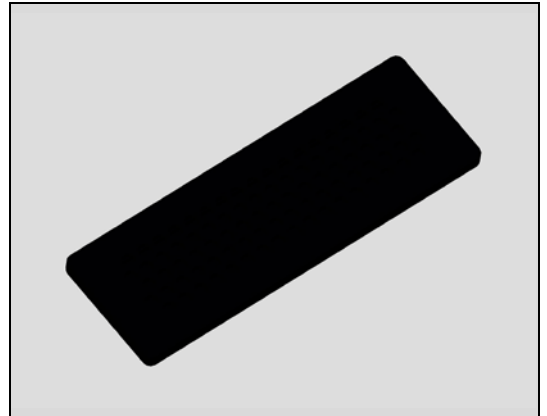
Carry out the Installation as described below!

Follow the 4.49 Installation instructions!

REMOVAL

Detach to remove the Mesh Loud Speaker with Dentist Hook.

Scrap! Not to be reused!



INSTALLATION

Place a new Mesh Receiver using a Flex Film Assembly Tool

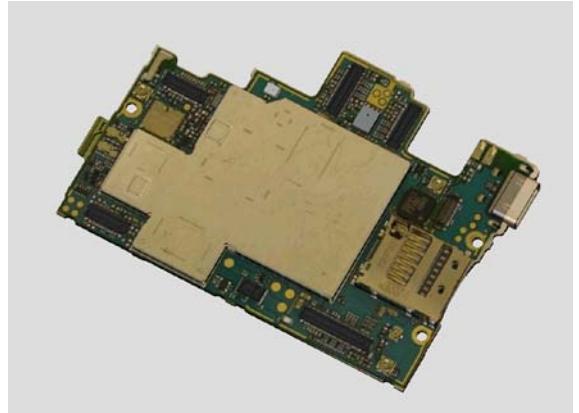
Replacement

4.51 Board Swap - Replacement

Follow the 3.1 to 3.8 Disassembly instructions!

Reuse the Camera 13 MPixel CMOS, Camera 2.2 MPixel CMOS!

Replace the Swap Board.



Follow the 5.5 to 5.12 Reassembly instructions!

Press the Key On/Off to power on the phone, place unit on flat desk and wait 4 minutes until system boot up has been completed.

Please DO NOT move the phone during starting up until "Select Language" menu is shown on the display!

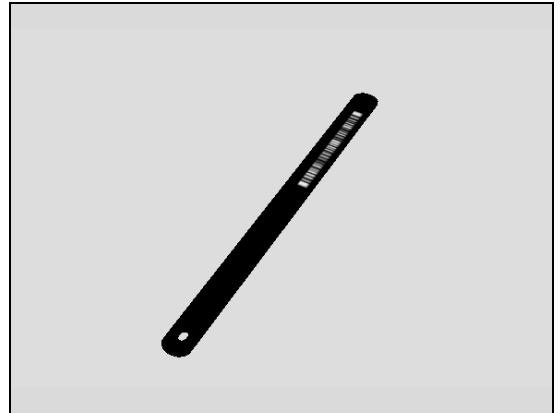
After "Select Language" menu, turn off the phone.

Replacement

4.52 Board Swap – Change Label

CHANGE COVER PANEL BOTTOM

Follow the instructions in the 1221-5655 Generic Repair Manual – Build swap for change of label.

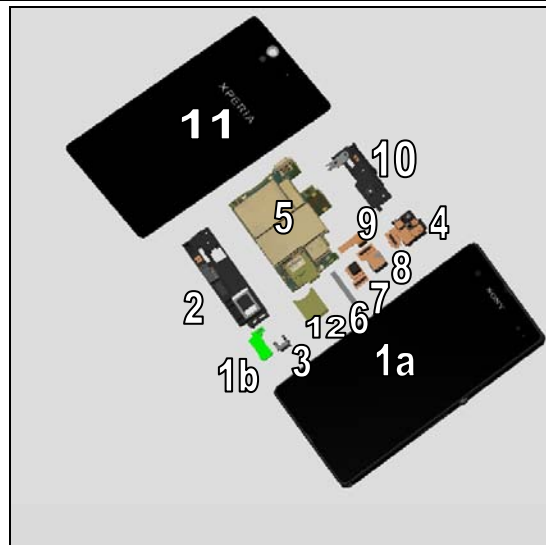


5 Re-Assembly

C6603, C6602, L36h

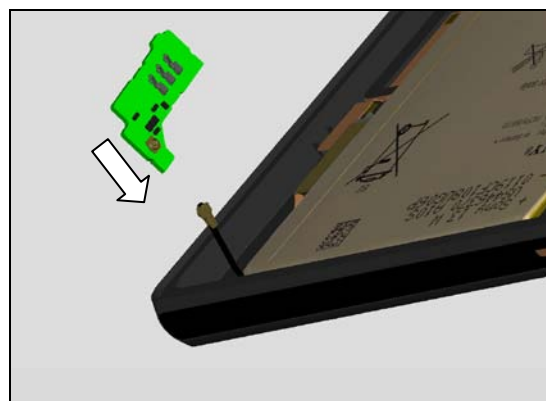
The Re-assembly is done to the following modules:

1. Front Assembly (a) and PBA Sub RoW (b)
2. Ant Main Flex RoW
3. Cover Con Vibrator
4. FPC Assembly Top RoW
5. Main PBA
6. Sheet Battery FPC
7. Camera 2.2 MPixel CMOS
8. Camera 13 MPixel CMOS
9. Copper Sheet McamB
10. Ant Diversity Flew RoW
11. Back Panel Assy
12. SIM Tray

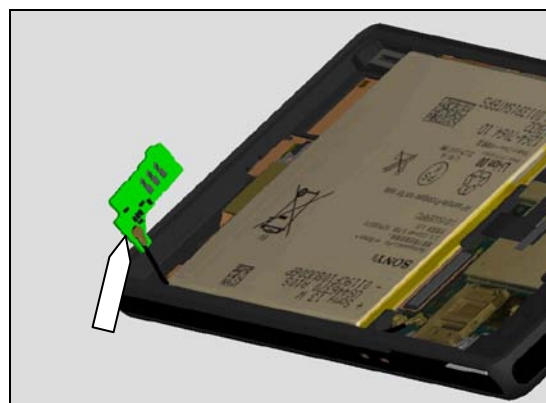


5.1 PBA Sub RoW and Front Assembly

Place the PBA Sub RoW to the Cable RF Cable, ASSY



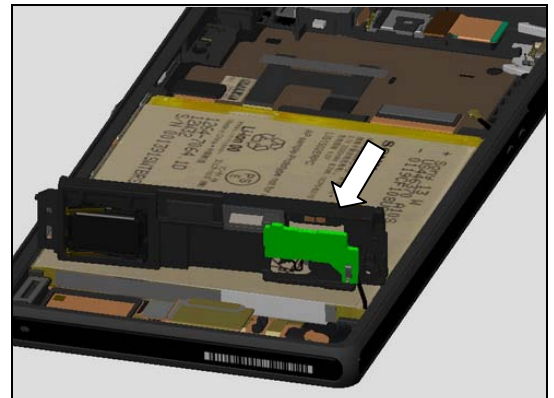
Press with fingers to secure the contact of Cable RF Coax Cable, ASSY



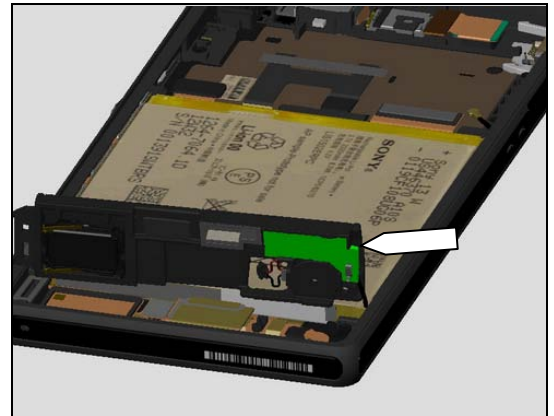
Re-Assembly

5.2 Ant Main Flex RoW

Place the Ant Main Flex RoW to the PBA Sub RoW



Press with fingers to secure the position of PBA Sub RoW



Place the Ant Main Flex RoW gently into the cavity



Press with fingers to secure the position of Ant Main Flex RoW



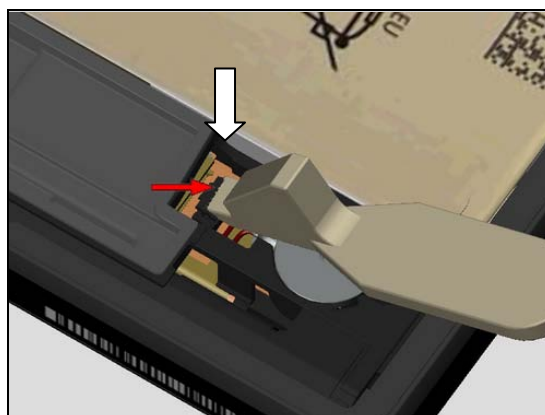
Re-Assembly

5.3 Cover Con Vibrator

Apply 13 Ncm torque when tightening the screw with Bits (JCIS No 0).



Use a Front Opening Tool to connect the Vibrator.

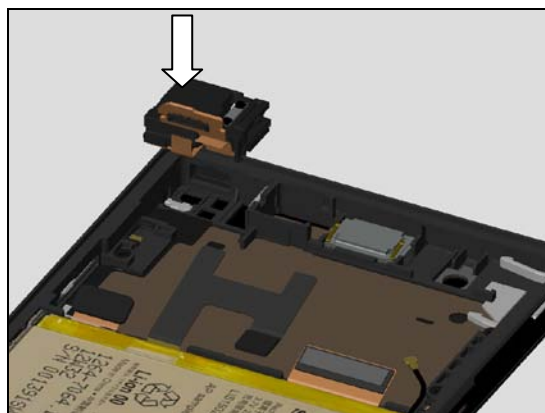


Place the Cover Con Vibrator into the cavity as shown with a pair of tweezers and press with fingers to secure the position.



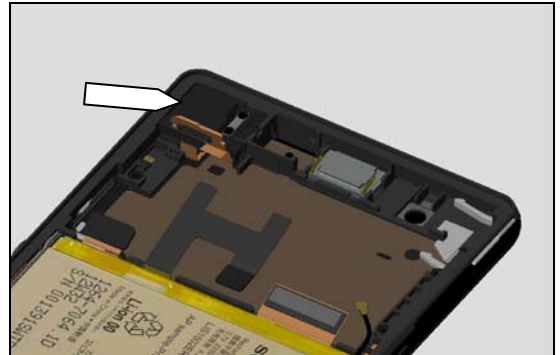
5.4 FPC Assembly Top RoW

Place the FPC Assembly Top RoW gently into the cavity



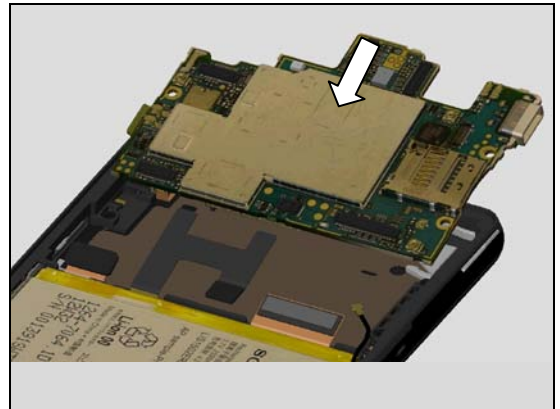
Re-Assembly

Press with fingers to secure the position of FPC Assembly Top RoW

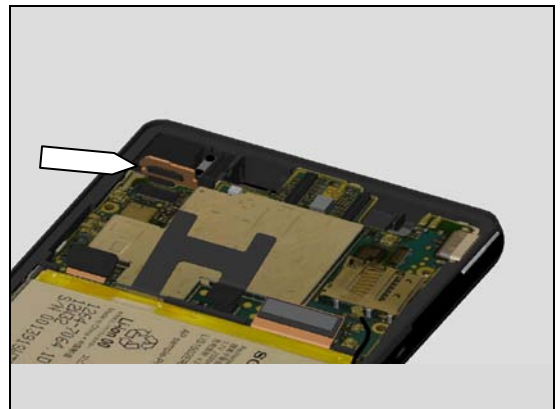


5.5 Main PBA

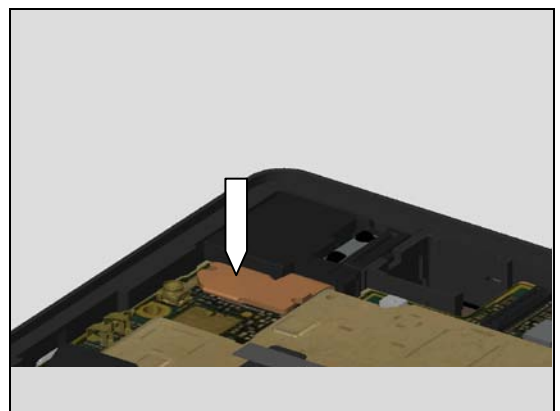
Slide in the Main PBA as shown with fingers



Note! Be careful with the flex of the FPC Assembly Top RoW so it is not damaged

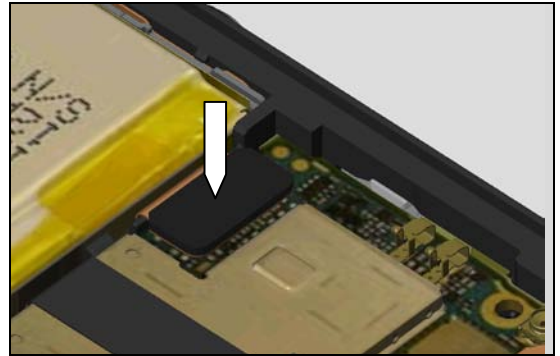


Press with fingers to secure the contact of BtB connector

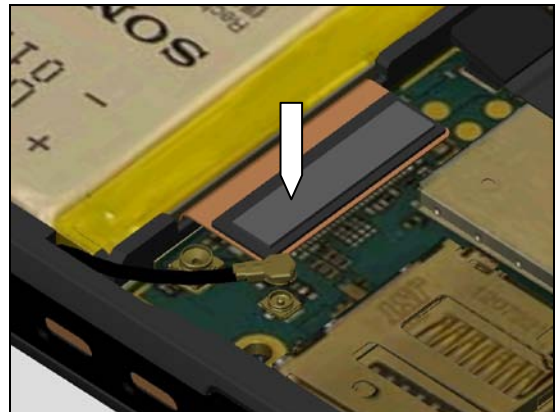


Re-Assembly

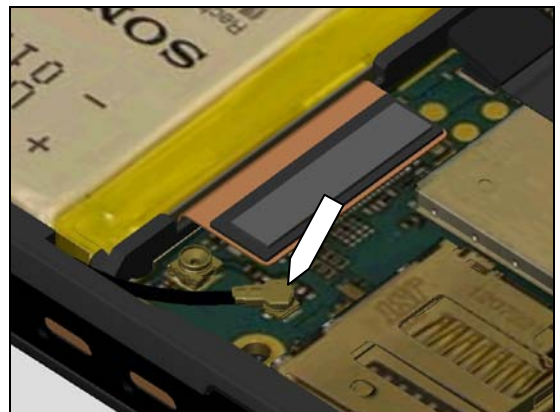
Press with fingers to secure the contact of BtB connector



Press with fingers to secure the contact of BtB connector

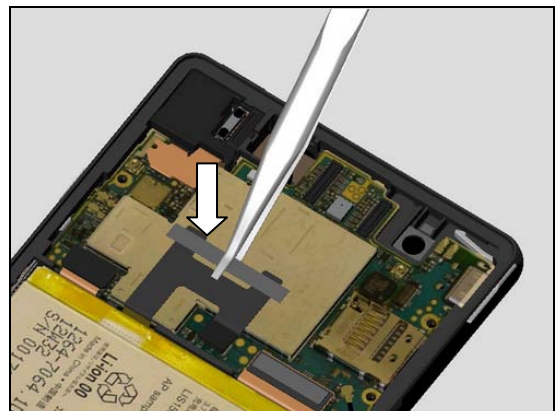


Press with fingers to secure the contact of Cable RF Coax Cable, ASSY



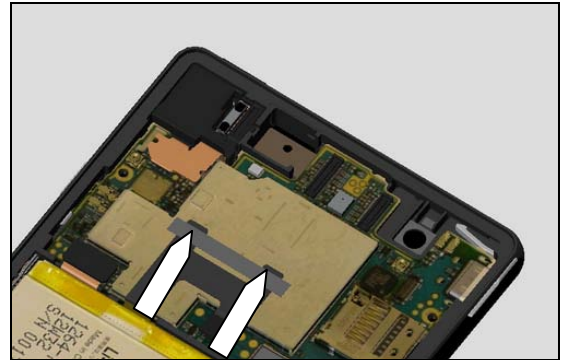
5.6 Sheet Battery FPC

Use the Flex Film Assembly Tool to position Sheet Battery FPC



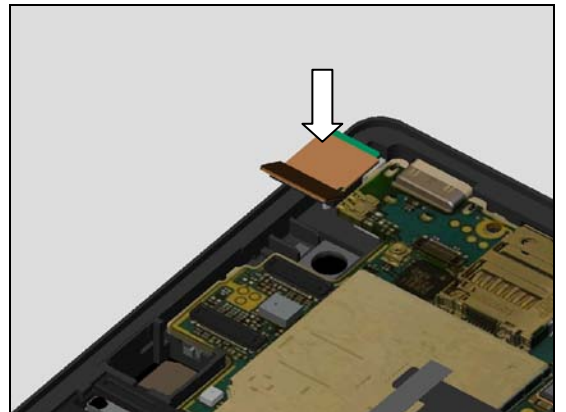
Re-Assembly

Placement of Sheet Battery FPC should be as in the picture

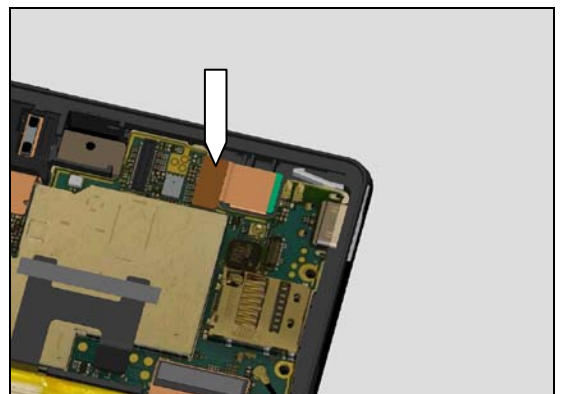


5.7 Camera 2.2 MPixel CMOS

Place the Camera 2.2 MPixel CMOS gently into the cavity

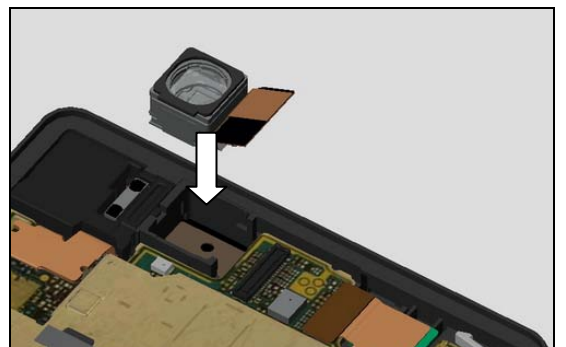


Press with fingers to secure the contact of BtB connector



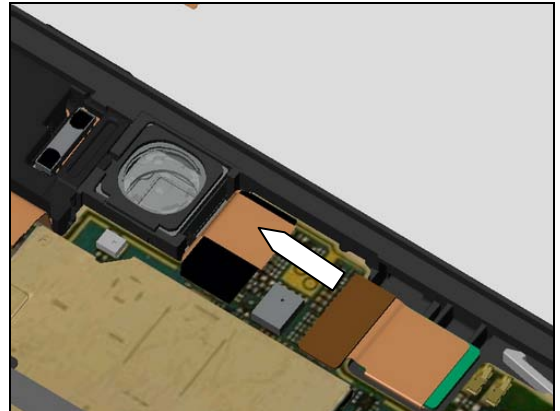
5.8 Camera 13 MPixel CMOS

Place the Camera 13 MPixel CMOS gently into the cavity



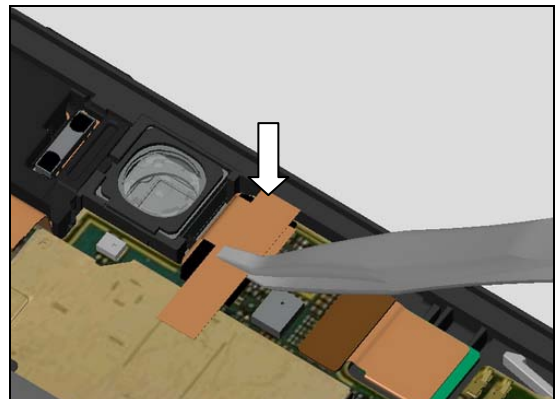
Re-Assembly

Press with fingers to secure the contact of BtB connector.

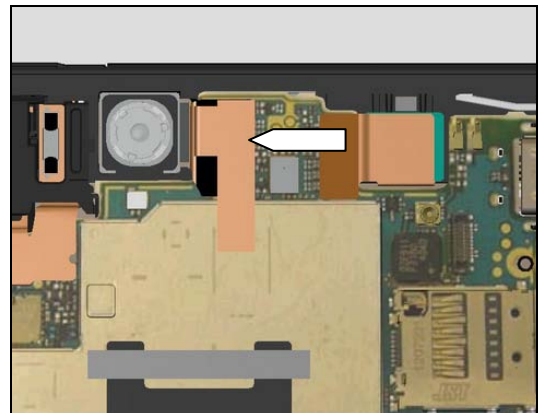


5.9 Copper Sheet McamB

Use the Flex Film Assembly Tool to position Copper Sheet McamB

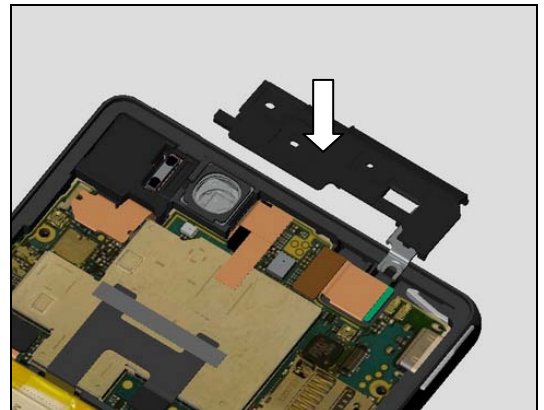


Placement of Copper Sheet McamB should be as in the picture



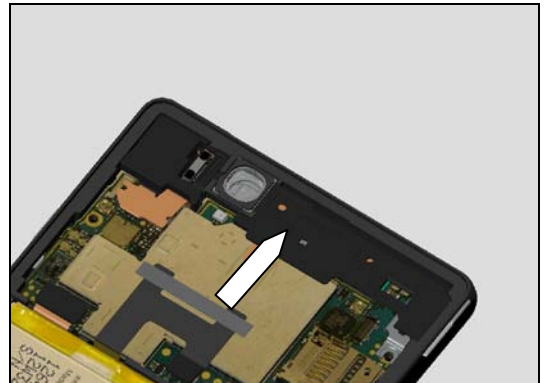
5.10 Ant Diversity Flex RoW

Place the Ant Diversity Flex RoW

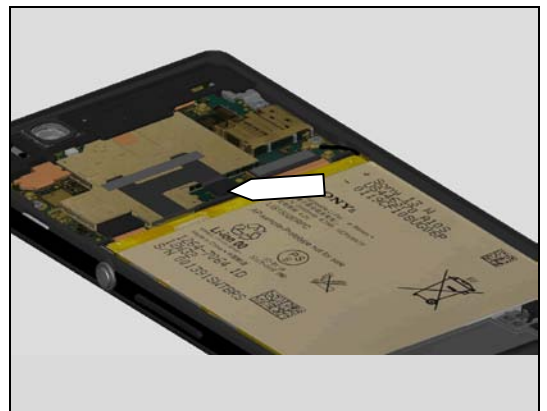


Re-Assembly

Press with fingers to secure its position.



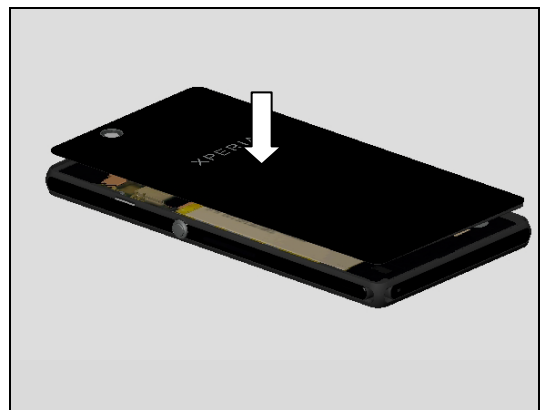
Apply 13 Ncm torque when tightening the Screw Other
Len:2.6 Diam:1.4 M with Bits (JCIS No 0).



5.11 Back Panel Assy

When reuse of Back Panel Assy begin with follow
Replacement section 4.34 Foil Adhesive Back Panel
otherwise take a new Back Panel Assy.

Place the Back Panel Assy on the frame



Re-Assembly

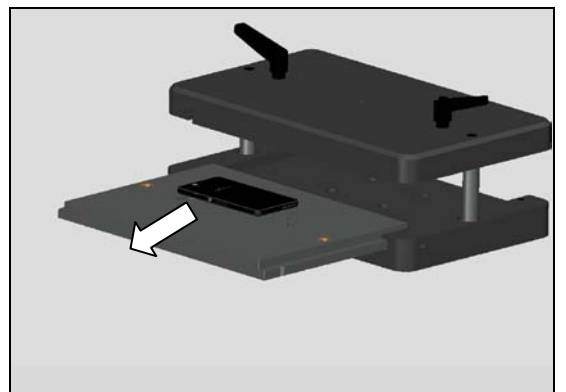
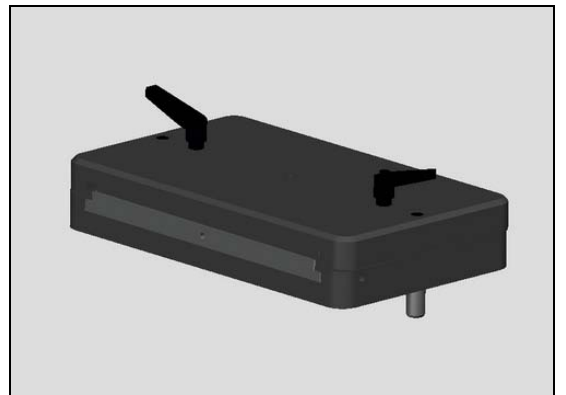
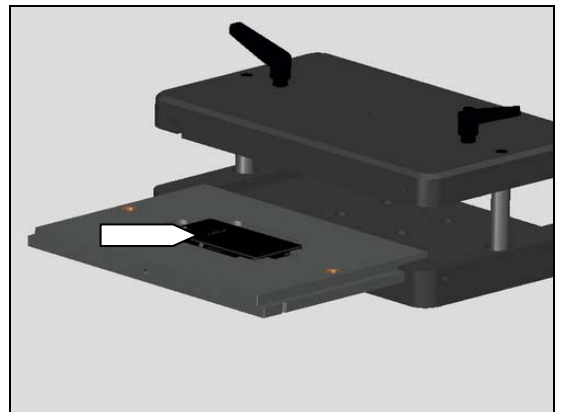
Make sure of an good alignment so the Back Panel Assy is centered

Upper inlay = Back Panel Top inlay

Lower inlay = Back Panel press Bottom inlay

Place the phone in the Back Panel press Bottom inlay and follow the instruction in 1003-9107 Tool Catalogue – mechanical and document Toothed Rack Press Instruction for use.

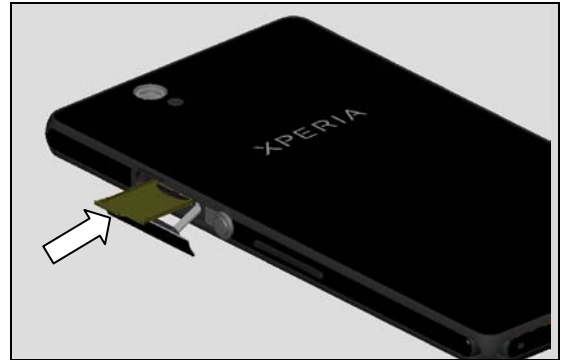
Press it with a pressure value of 490N for ten seconds (pressure value is adjust from 600N because of the weight of the press fixture)



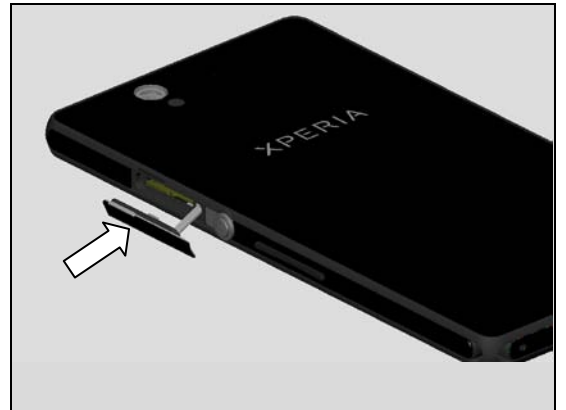
Re-Assembly

5.12 SIM Tray

Insert the SIM Tray with fingers



Close the Cap SIM Assy R



6 Revision History

Rev.	Date	Changes / Comments
1	2013-02-20	First Release
2	2013-02-28	New pressure value for chapter 4.21 and 5.11
3	2013-03-27	Updated chapter 4.36 and added 4.46, 4.47, 4.48
4	2013-05-14	Updated the chapter 4.38
5	2013-05-24	Update the chapter 4.37
6	2013-06-20	Update the chapter 4.21
7	2013-07-04	Update the cover page
8	2013-09-05	Add the chapter 4.49 and 4.50
9	2013-11-01	Update the chapter 4.21
10	2013-11-04	Update the chapter 4.21